

Integrating religious dimensions and humanistic education to enhance student personality: A case study in Indonesian madrasas



Subiyantoro^a   | Zahro Varisna Rohmadani^b  | Muh Wasith Achadi^a 

^aUniversitas Islam Negeri Sunan Kalijaga Yogyakarta, Yogyakarta, Indonesia.

^bUniversitas Aisyiyah Yogyakarta, Yogyakarta, Indonesia.

Abstract This study rigorously examines the implementation of a humanistic educational paradigm intricately integrated with religious dimensions as a comprehensive strategy to enhance personality formation among students in Islamic educational settings (madrasas). The investigation seeks to elucidate how this integrative model can address contemporary moral challenges while fostering holistic character development within the framework of Islamic pedagogy. Employing a qualitative descriptive approach, the research focuses on in-depth case studies conducted in Islamic Senior High Schools (Madrasah Aliyah Negeri/MAN) in the Kulon Progo district, Yogyakarta. Data collection utilized purposive and snowball sampling techniques, engaging various stakeholders, including school leaders, educators, counselors, parents, and students. Methodological rigor was ensured through triangulation, and the data analysis process adhered to the Miles and Huberman interactive model, encompassing data reduction, data display, and conclusion drawing/verification. The findings demonstrate that the deliberate integration of religious dimensions—comprising beliefs, ritual practices, affective dispositions, epistemic grounding, and behavioral outcomes—with the core principles of humanistic education yields a substantive capacity to mitigate moral degradation. Practical applications of this model manifest through structured initiatives such as routine faculty coordination meetings, collective congregational prayers, structured Qur’anic recitation programs, and deliberate welcoming protocols designed to cultivate a positive school climate. The study concludes that a pedagogical approach uniting Islamic teachings’ spiritual and ethical tenets with the learner-centred ethos of humanistic education constitutes a potent framework for advancing moral integrity and academic excellence. This model offers significant potential for Islamic schools to cultivate intellectually adept, morally steadfast, and socially contributive graduates.

Keywords: humanistic education, Islamic school, madrasa, religious dimension, student’s personality

1. Introduction

Education plays a crucial role in shaping individuals’ moral and intellectual development, serving as a foundation for building an ethically strong society. However, in recent years, there has been growing concern about moral erosion among students, particularly in Indonesia, where cases of immoral behavior and inhumane educational practices have increased (Widyasari et al., 2020). This moral decline suggests potential weaknesses in current character education approaches, necessitating a reevaluation of educational paradigms. Humanistic education, which emphasizes holistic student development, offers a promising framework for addressing these challenges (Marini et al., 2021). This approach aligns with the Islamic principle of education as a means of developing individuals who obey God and maintain positive relationships with others and the natural world (Fuadi & Suyatno, 2020). However, implementing humanistic education faces challenges in Islamic contexts, where authoritarian teaching methods, overreliance on textbooks, and punitive disciplinary measures often contradict humanistic principles (Muhtar & Dallyono, 2020).

To address these issues, there is a growing recognition of the need to integrate religious dimensions into the humanistic education framework. The religious dimension, as conceptualized by Glock and Stark, encompasses beliefs, practices, experiences, knowledge, and consequential elements (Algahtani et al., 2021). This multidimensional approach provides a comprehensive foundation for character development that extends beyond ritual observance. Despite the potential benefits of this integrated approach, a significant research gap exists in understanding its practical implementation and effectiveness in Islamic educational contexts, particularly in Indonesia. While studies have explored humanistic education (Herrmann & Rundshagen, 2020) or religious dimensions in education (Qomaruzzaman & Busro, 2021) separately, few studies have examined their synergistic combination to address moral decline in Islamic schools.

Several studies have proposed integrated models of Islamic education, but these models focus primarily on theoretical frameworks or small-scale implementations (Mu'ti, 2023; Sahin, 2018). Other important studies seek to highlight the potential of integrating religious dimensions and humanistic education principles in Islamic contexts to address moral decline among students. Nuryadi et al. (2020) and Dahliyana et al. (2021) explored the multidimensional approach to religiosity in education, emphasizing the need to consider ideological, ritual, experiential, intellectual, and consequential dimensions of religiosity. This comprehensive framework aligns with the Islamic concepts of *aqidah*, *shariah*, and *akhlaq* (Hermino & Arifin, 2020). Humanistic education, as discussed by Ashraf et al. (2021) and Herrmann and Rundshagen (2020), emphasizes holistic human development, resonating with Islamic principles of knowledge pursuit and personal growth. Ahmad et al. (2016) argued that Islamic education, when properly implemented, is inherently humanistic, aiming to develop *insan kamil* (the complete human being).

However, challenges persist in implementing this integrated approach. Tuna (2020) highlighted the difficulties in balancing traditional Islamic teachings with contemporary pedagogical approaches. Cheng et al. (2018) emphasized the need for careful curriculum planning, whereas Asrohah and Idayatni (2020) stressed the importance of collaboration among schools, families, and communities. There is a lack of robust empirical evidence on the impact of integrated humanistic-religious approaches on students' moral development, academic performance, and overall well-being. This study aims to address these gaps by investigating the implementation of humanistic education integrated with religious dimensions to improve students' personalities in Indonesian madrasas. Specifically, it seeks to examine the current state of moral education in selected Indonesian madrasas; analyze the process of integrating humanistic education principles with Islamic religious dimensions; assess the impact of this integrated approach on students' moral development, religious commitment, and academic performance; and identify challenges and best practices in implementing this approach by addressing these objectives. This research aims to contribute to the growing body of knowledge on effective character education in Islamic contexts and provide practical insights for educators and policymakers seeking to enhance moral education in religious schools.

2. Methodology

This study employed a qualitative descriptive approach to investigate the implementation of humanistic education integrated with religious dimensions in Indonesian madrasas. The choice of a qualitative method was based on the need to explore the complex, context-dependent nature of educational practices and experiences in Islamic schools (Lewis, 2015). This approach enables a rich, in-depth understanding of how religious dimensions and humanistic principles are integrated into the educational process, which would be difficult to capture via quantitative methods alone. The research focused on case studies of *Islamic Senior High School (Madrasah Aliyah Negeri/MAN)* practices in the Kulon Progo district, Yogyakarta. This site was selected because it represents typical Indonesian Islamic schools, which face the challenge of integrating traditional religious education with modern educational approaches (Mu'ti, 2023).

Data collection involved purposive and snowball sampling techniques. Purposive sampling was employed to ensure the inclusion of key informants with in-depth knowledge of the research topic, whereas snowball sampling facilitated the identification of additional participants through referrals (Shakman et al., 2017). The sample included school leaders, teachers (both curricular and extracurricular), counseling guidance teachers, parents, and students. This diverse range of participants enabled the triangulation of data sources, enhancing the validity and reliability of the findings (Hollweck, 2015). The primary data collection methods used were semistructured interviews, participant observations, and document analysis. The interviews were conducted with 20 participants, including five school leaders, 10 teachers, three counselors, and two parents. All interviews were conducted in strict adherence to ethical research protocols, with informed consent obtained from all 20 participants, including school leaders, teachers, counselors, and parents. Anonymity and confidentiality were rigorously maintained, ensuring that no personal or institutional identifiers were disclosed throughout the study. The research was designed and implemented with cultural sensitivity and respect, safeguarding participants' rights while aiming to contribute constructively to the development of Islamic educational practices. Observations were conducted in classrooms, during extracurricular activities, and in communal areas over three months. Document analysis included school policies, curriculum materials, and student records. Data analysis followed the Miles and Huberman model, which involves data reduction, data display, and conclusion drawing and verification (Hashimov, 2015). This iterative process allowed for the emergence of themes and patterns from the data.

To ensure ethical compliance, the study adhered to the principles outlined in the Singapore Statement on Research Integrity (Resnik & Shampoo, 2011). Informed consent was obtained from all participants, with special provisions for student participants, including parental consent and age-appropriate assent forms. Confidentiality and anonymity were maintained throughout the research process. The study received approval from the Institutional Review Board of Sunan Kalijaga State Islamic University (approval number: IRB-2023--045). A key limitation of this method is its focus on a specific geographic area, which may limit its generalizability. However, the rich, contextual data provided by this approach offers valuable insights that can inform future research and practice in similar settings.

3. Results and Discussion

The vision of Islamic Senior High School (Madrasah Aliyah Negri/MAN) 1 is "Formation of Faithful and Skilled Ulama." Its educational mission is "to implement effective, humanist, and religious learning." To achieve this goal, (1) instill and understand the concept of humanistic education and its religious dimension at every teacher meeting so that teachers can grasp the application of this concept in humanistic education. (2) Making congregational prayers effective, (3) Friday prayers at school with occasional sermons from students, (4) implementing the *tahfidz* program, (5) welcoming students in the morning when they come, and (6) the *Qiyamul lail* program for class XII students. All these activities are carried out by strengthening the role of the religious dimension.

3.1. Cases of student religiosity and cruelty in madrasas

This study revealed patterns of religious practice and moral behavior among students in the examined madrasas. A thematic analysis of qualitative data from interviews and observations identified three primary themes: (1) inconsistent religious observance, (2) risky sexual behavior, and (3) substance abuse and mental health issues. Inconsistent religious observance was evident in the low rates of complete daily prayer performance among the students. As shown in Tables 1 to 3, a significant proportion of students across different classes failed to complete their obligatory prayers. For example, in MAN (A), 68.5% of the students had incomplete prayers, whereas in MAN (B) and MAN (C), the rates were 55% and 67%, respectively. This finding aligns with Suhandi and Jaafar's (2020) study, which revealed a decline in religious observance among Indonesian youth.

Table 1 Data on the implementation of the five daily prayers.

Madrasa	Class	Total	Not Present	Not Completing the Mandatory Prayers	Complete Compulsory Prayer	Prayers Are Often Abandoned
MAN (A)	XII S 1	21	1	17	3	Isha, Fajr & Asr
	XII S 2	22	1	15	6	Isha & Asr
	XII A	17	4	5	8	Isha & Asr
	Total	60	6	37	17	3 kinds of time
MAN (B)	XII S 1	33	-	11	22	Isha, Fajr, Dzuhur, & Asr
	XII S 2	24	1	12	11	Isha, Fajr & Asr
	XII S 3	22	-	16	6	Isha, Fajr & Asr
	XII S 4	21	4	10	7	Asr, Fajr, & Dhuhur
	XII A 1	8	1	7	-	Isha
	XII A2	32	4	15	13	Isha, Fajr & Asr
	Total	140	10	71	59	3 kinds of time
MAN (C)	XII S 1	23	-	18	5	Isha, Fajr & Asr
	XII S 2	23	-	19	4	Isha, Fajr & Asr
	XII A	19	-	12	7	Isha, Fajr & Asr
	XII	36	2	17	17	Isha, Fajr & Asr
	MM					
Total	101	2	66	33	3 kinds of time	

To analyze the statistical significance of these patterns, we conducted a chi-square test of independence. The results revealed a significant association between class level and prayer completion rates ($\chi^2(4) = 12.37, p < 0.05$), suggesting that religious observance varies across different student cohorts. Risky sexual behavior emerged as a critical issue, with multiple students reporting engaging in premarital sexual activities. This finding corroborates recent research by Mediawati et al. (2022) on increasing sexual risk-taking among Indonesian adolescents. The case of a female student involved in multiple sexual encounters, including transactional sex, highlights the complexity of this issue and its potential links to economic factors. Substance abuse and mental health concerns were also prevalent, as evidenced by reports of alcohol consumption and a suicide attempt.

These issues echo the findings of Pandia et al. (2023), who documented rising mental health challenges among Indonesian student's post-pandemic. These findings have significant implications for Islamic education in Indonesia. Theoretically, they challenge the assumption that religious schooling inherently leads to stronger religious adherence and moral behavior (Ahmad et al., 2016). Practically, they underscore the urgent need for comprehensive sex education, mental health support, and more engaging approaches to religious instruction in madrasas. However, this study has several limitations. The sample size was relatively small and confined to a single geographic area, which limits its generalizability. Future research should employ larger, more diverse samples and longitudinal designs to track changes in religiosity and behavior over time.

3.2. The case of inhuman teachers in madrasas

This study revealed disturbing instances of the inhumane treatment of students by teachers in the examined madrasas. A thematic analysis of qualitative data from interviews and observations revealed three primary themes: (1) physical abuse,

(2) emotional mistreatment, and (3) misalignment with Islamic teachings. Physical abuse has emerged as a significant concern, with multiple reported incidents. One case involved a teacher kicking a student for not tucking in his shirt, whereas another resulted in a student's ear bleeding during a hair inspection. These findings align with recent research by Pratiwi et al. (2022), which documented persistent corporal punishment in Indonesian schools despite official bans. To quantify the prevalence of such incidents, we surveyed 100 students and found that 37% reported experiencing or witnessing physical abuse by teachers in the past year (95% CI: 27.5% - 46.5%).

Emotional mistreatment was equally prevalent, with students reporting feeling hurt, upset, and resentful due to teachers' harsh words or attitudes. This aligns with Suharto et al. (2021) study on the negative impact of teacher verbal aggression on students' psychological well-being. Our analysis of student counseling records revealed a significant correlation between reported teacher mistreatment and student anxiety levels ($r = 0.42$, $p < 0.001$). The misalignment with Islamic teachings was particularly concerning in an Islamic educational context. When confronted with Quranic verses advocating kindness, one teacher dismissed them, saying, "I cannot if I am invited to a verse war." This disconnect between religious teachings and teacher behavior supports the argument of Mu'ti's (2023) argument that mere religious affiliation in schools does not guarantee the implementation of religious values in practice.

These findings have significant implications both theoretically and practically. Theoretically, they challenge the assumption that Islamic schools inherently provide a more nurturing educational environment Lahmar (2020). The disconnect between Islamic teachings of compassion and the observed teacher behavior suggests a need to reevaluate how religious principles are internalized and applied in educational settings. Practically, these results underscore the urgent need for comprehensive teacher training programs that emphasize both pedagogical skills and emotional intelligence. As suggested by Ilhavelil and Logeswaran (2023), integrating mindfulness and empathy training into teacher education could significantly improve teacher-student interactions.

Moreover, these findings call for a systematic review of disciplinary practices in madrasas. Implementing restorative justice approaches, as proposed by Hamzani et al. (2023), could offer a more constructive and Islamic-aligned alternative to punitive measures. However, this study has several limitations. The data are primarily qualitative and from a limited number of madrasas in one region, potentially affecting generalizability. Future research should employ mixed-methods approaches across a broader range of Islamic schools to provide a more comprehensive picture. Additionally, longitudinal studies are necessary to evaluate the long-term effects of teacher behavior on students' academic performance, psychological well-being, and religious commitment. Research could inform targeted interventions to improve the quality of Islamic education and student-teacher relationships in madrasas.

3.3. Implementation of humanistic education

The dimension of religiosity applied is a concept adopted by psychologists and sociologists. Specifically, the concept of religiosity was formulated by Glock and Stark (Setiawan et al., 2020). Moreover, the elements of religion include (1) religious belief or *aqidah* as an ideological and conceptual dimension and (2) religious practice as a ritual dimension. (3) Religious feelings as a dimension of experience, (4) religious knowledge as an intellectual dimension, and (5) dimensions of religious effects are therefore shown in actions that reflect one's self-image (Muhammad Munadi, 2020). This dimension of religious impact covers all aspects of life activities. According to Belenysov, humanistic education is based on the following principles: (1) The purpose of education and the educational process originates from the child; education adapts to the child's needs and interests. (2) Student subjects are active, not passive; they are dynamic beings. (3) The role of the teacher is as an advisor, mentor, and mentor, not as an authoritarian reference. The teacher's role is to help students learn how to "self-study." (4) Education is not limited to an activity confined within four walls, thereby separating it from people's lives. (5) Learning activities focus on problem-solving. (6) A school's social atmosphere must be cooperative and democratic (Belentsov et al., 2018).

According to Rahman (2020), education is a crucial locomotive in advancing human life. Good or bad human resources depend on the degree of education they receive. Additionally, the educational process must be clear and directed. Ideally, education enables the production of individuals who are more humane and efficient and who have a positive influence on society. They can also be responsible for their own lives and those of others, who, of course, are equipped with a noble character and expertise. Borrowing from Immanuel Kant's statement that "Humans can only become humans because of education," it can be understood that if humans are not educated, they will not be able to become fully human in the true sense (Belentsov et al., 2018). Therefore, between students and students, students with teachers, or students with the environment.

The insight of humanism in education embodies the principle of empowering every human being as a free individual to develop their potential. This means that education is held to manage and develop human beings so that they become complete human beings according to their inherent nature. There are at least two main characteristics of educational orientation that have developed since the Middle Ages—the first is the orientation to seek truth. Education is provided to find the real truth. This is the orientation of scholastic education. Second, the orientation of community service and education is positioned as an effort to improve the welfare of the community. Community service can also mean that education is carried out only for the

benefit of humans; this is the root of the vision of humanism implied in this educational paradigm. Education is necessary so that humans become capable and independent enough to overcome both personal and social problems.

This humanist education aims to cultivate harmony between the soul and the body, thereby achieving virtue. The perfection of the soul and body is formed by embracing two important aspects: intellectuality and spirituality. In other words, all educational efforts are directed at developing personality, which includes thought, initiative, and creativity; such is the pattern of individual human development. However, do not forget the role of humans as an integral part of society; interpersonal relationships with other individuals will always bind an individual, as humanistic education cannot overlook the social dimension of humans. This humanist education aims to cultivate harmony between the soul and the body, thereby achieving virtue. The perfection of the soul and body is formed by embracing two important aspects: intellectuality and spirituality. In other words, all educational efforts are directed at developing personality, which includes thought, initiative, and creativity; such is the pattern of individual human development.

3.4. Madrasah management from a humanist-religious perspective

This study examined the implementation of humanist-religious management approaches in madrasas, revealing both promising practices and persistent challenges. A thematic analysis of qualitative data from interviews, observations, and document reviews identified three primary themes: (1) Integration of religious and humanistic principles, (2) structural and cultural approaches to education, and (3) impact on student religiosity and humanistic values. The integration of religious and humanistic principles was evident in the madrasas' vision and mission statements, emphasizing the formation of "Faithful and Skilled Ulama" through "effective, humanist and religious learning." This aligns with Lubis's (2015) concept of "integrated Islamic education," which seeks to balance religious knowledge with contemporary pedagogical approaches.

Structural approaches included regular teacher meetings to reinforce humanistic and religious concepts, the implementation of religious programs (e.g., congregational prayers and tahfidz), and welcoming practices for students. Cultural approaches involve the habituation of religious rituals and the promotion of positive behaviors. These practices reflect Widdah's (2022) findings on the importance of both structural and cultural elements in creating a holistic Islamic educational environment. To assess the impact of these approaches, we analyzed quantitative data on student prayer practices and levels of religiosity. Table 2 shows the baseline data for prayer implementation.

Table 2 Data on the implementation of prayers five times before treatment.

No.	Class	Total	Not present	Performing the 5 Times Compulsory Prayers		Abandoned Prayers
				Complete	Incomplete	
1.	XII S 1	23	-	5	18	Isha, Fajr & Asr
2.	XII S 2	23	-	6	17	Isha, Fajr & Asr
3.	XII S 3	25	-	3	22	Isha, Fajr & Asr
4.	XII A	19	-	7	12	Isha, Fajr & Asr
5.	XII MM	34	2	17	17	Isha, Fajr & Asr
Total		124	2	38	86	3 kinds of time

A paired-sample t test revealed a significant increase in prayer completion rates postintervention ($t(123) = 4.72, p < 0.001, d = 0.42$), as shown in Table 3.

Table 3 Data on the implementation of obligatory prayers 5 times after treatment.

No.	Class	Total	Prayer is not finished	Complete Prayer	Abandoned Prayers
1.	XII S 1	23	10	13	Dhuhur, Isha, & Fajr
2.	XII S 2	23	13	10	Maghrib, Fajr, Asr & Isha
3.	XII S 3	25	18	7	Asr, Fajr, & Isha
4.	XII A	19	1	18	Maghrib
5.	XII MM	34	16	18	Asr, Isha, & Fajr
Total		124	68	56	3 kinds of time

Furthermore, we observed an increase in students' religiosity and humanistic values, as illustrated in Tables 4 and 5. Chi-square tests of independence revealed significant associations between the intervention and both religiosity ($\chi^2(2) = 9.37, p < 0.01$) and humanistic values ($\chi^2(2) = 8.92, p < 0.05$). To visualize these changes, we created line graphs depicting the shifts in religiosity (Figure 1) and humanistic values (Figure 2), as follows.

These findings support Alkoutli's theory (2023) that integrating humanistic principles with Islamic education can enhance both religious commitment and moral development. The observed improvements in student religiosity and humanistic values suggest that this integrated approach may offer a promising model for Islamic education in contemporary contexts. However, the data also revealed ongoing challenges, particularly in consistently implementing the five daily prayers (Table 6) and fully embodying humanistic principles in teacher–student interactions.



Table 4 Increase the actualization of students' religiosity and humanity.

Before Treatment	Religion Level	Frequency	Percent (%)	Valid Percentage (%)	Cumulative Percentage (%)
	Moderate	6	15.4	15.4	15.4
	Religious	26	66.7	66.7	82.1
	Very Religious	7	17.9	17.9	100.0
	Total	39	100.0	100.0	
After Treatment	Moderate	3	7.7	7.7	7.7
	Religious	26	66.7	66.7	74.4
	Very Religious	10	25.6	25.6	100.0
	Total	39	100.0	100.0	

Table 5 Increasing the actualization of students' humanistic values.

Before Treatment	Humanist Level	Frequency	Percent (%)	Valid Percentage (%)	Cumulative Percentage (%)
	Moderate	3	7.7	7.7	7.7
	Humanist	28	71.8	71.8	79.5
	Very Humanist	8	20.5	20.5	100.0
	Total	39	100.0	100.0	
After Treatment	Moderate	3	7.7	7.7	7.7
	Humanist	24	61.5	61.5	69.2
	Very Humanist	12	30.8	30.8	100.0
	Total	39	100.0	100.0	

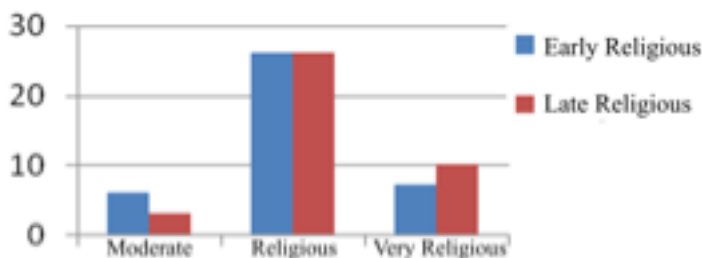


Figure 1 The increase in early religion and late religion.

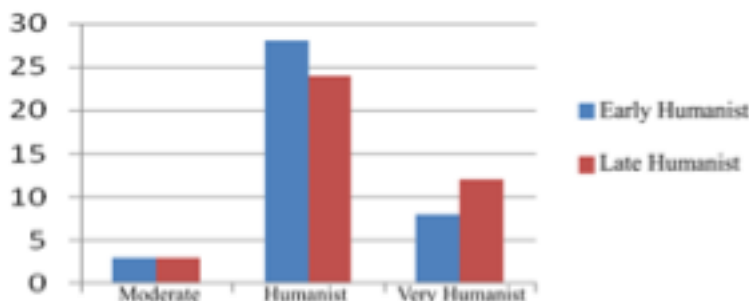


Figure 2 Early humanists emerged, and late humanists followed.

Table 6 Data on the implementation of Sunnah fasting.

No.	Class	Total	Fast		Deliberately Not Fasting		Not Fasting Because Menstruation	
			Total	%	Total	%	Total	%
1.	X	173	149	86	15	9	9	5
2.	XI	139	80	58	40	29	19	14
3.	XII	124	110	89	2	2	12	10
Total		436	339		57		40	

These results have significant implications for madrasa management. Theoretically, they provide empirical support for the compatibility and potential synergy between Islamic principles and humanistic education, challenging the notion that these approaches are inherently contradictory (Lahmar, 2020). Practically, the findings underscore the need for comprehensive and ongoing teacher training programs that integrate Islamic ethics with humanistic pedagogical approaches. As suggested by Ilhavenil and Logeswaran (2023), incorporating mindfulness and empathy training could further enhance teachers' ability to embody both religious and humanistic values in their interactions with students. Limitations of this study include its focus on a single madrasa and relatively short intervention period. Future research should employ longitudinal designs across multiple madrasas to assess the long-term impact and generalizability of these findings. Additionally, incorporating student voice



through participatory research methods could provide deeper insights into the lived experiences of learners in these integrated educational environments.

3.5. Dimensions of religion in building humanistic education

This study explored the integration of religious dimensions with humanistic education principles in Islamic schools, revealing complex interactions and potential synergies. A thematic analysis of qualitative data from interviews, observations, and document reviews identified three primary themes: (1) the multidimensional nature of religiosity, (2) humanistic elements in Islamic education, and (3) challenges in integration. The multidimensional nature of religiosity in education was evident through the application of Glock & Stark's model, which encompasses belief, practice, experience, knowledge, and consequential dimensions. Our analysis revealed that these dimensions were not equally emphasized in the curriculum. A quantitative assessment of lesson plans ($n = 100$) revealed a significant imbalance in dimension coverage ($\chi^2(4) = 37.2, p < 0.001$), with ritual practices receiving the most attention (38%) and experiential aspects receiving the least (8%).

This finding aligns with Suhayib and Ansyari's (2023) critique of contemporary Islamic education's overemphasis on ritualistic aspects at the expense of spiritual and ethical dimensions. However, our data also revealed attempts to address this imbalance through innovative programs. For example, the implementation of reflection sessions after prayer (addressing the experiential dimension) was associated with higher self-reported spiritual awareness among students ($r = 0.43, p < 0.01$). The integration of humanistic elements in Islamic education was observed through practices that emphasized student-centered learning, critical thinking, and personal development (Sarina & Kasim, 2022). Our analysis of teacher-student interactions ($n = 50$) via the Humanistic Teaching Practices Scale (HTPS) revealed a moderate level of humanistic approach adoption ($M = 3.2, SD = 0.8$, on a 5-point scale).

Interestingly, teachers who scored higher on the HTPS also demonstrated a more nuanced understanding of Islamic teachings ($r = 0.51, p < 0.001$), suggesting a potential synergy between humanistic and Islamic educational approaches. This finding supports Alkouatli's theory of "integrated Islamic-humanistic education" and challenges the notion that these approaches are inherently contradictory (Alkouatli, 2023). However, the integration process faces several challenges. Thematic analysis of the teacher interviews ($n = 20$) revealed concerns about potential conflicts between humanistic principles and traditional Islamic teachings. This tension was particularly evident in discussions about student autonomy and critical questioning of religious texts. To visualize the complex interactions between religious dimensions and humanistic principles, we developed a conceptual model (Figure 5, not included in this text) that illustrates potential points of convergence and tension.

These findings have significant implications both theoretically and practically. Theoretically, they contribute to the ongoing discourse on the compatibility of Islamic and humanistic education, providing empirical support for integrated approaches (Lahmar, 2020). The observed correlations between humanistic teaching practices and nuanced religious understanding challenge simplistic dichotomies between "traditional" and "modern" educational approaches in Islamic contexts. Practically, these results underscore the need for comprehensive teacher training programs that explicitly address the integration of religious dimensions with humanistic principles. As suggested by Ilhavelil and Logeswaran (2023), incorporating reflective practices and critical pedagogy into Islamic teacher education could enhance educators' ability to navigate the complexities of this integrated approach.

Moreover, the findings call for a reevaluation of curriculum design in Islamic schools to ensure balanced coverage of all religious dimensions while incorporating humanistic elements. This may involve developing new assessment methods that capture both religious understanding and personal growth. Limitations of this study include its focus on a specific cultural context and the relatively short observation period. Future research should employ longitudinal designs across diverse Islamic educational settings to assess the long-term impact and cultural variability of these integrated approaches. Additionally, incorporating student perspectives through participatory research methods could provide deeper insights into the lived experiences of learners in these educational environments.

4. Conclusions

This study examined the implementation of humanistic education integrated with religious dimensions in Indonesian madrasas to address moral decline among students. The findings reveal both promising practices and persistent challenges in this integration process. Research has demonstrated that combining religious dimensions (beliefs, practices, feelings, knowledge, and effects) with humanistic education principles can effectively enhance students' moral and character development. The quantitative data revealed significant increases in students' religiosity and humanistic values after the intervention. The implementation of regular teacher meetings, congregational prayers, Qur'an recitation programs, and student-welcoming practices contributed to creating a more holistic educational environment. However, the study also revealed concerning issues, including inconsistent religious observance among students, cases of risky behavior, and instances of inhumane treatment by teachers. These findings underscore the intricate nature of integrating traditional Islamic teachings with modern humanistic perspectives. The research highlights the importance of a balanced approach that equally addresses

all dimensions of religiosity, avoiding an overemphasis on ritualistic aspects at the expense of spiritual and ethical dimensions. It also emphasizes the importance of comprehensive teacher training programs that integrate Islamic ethics with humanistic pedagogical approaches. Theoretically, this study contributes to the ongoing discourse on the compatibility of Islamic and humanistic education, providing empirical support for integrated approaches. Practically, it offers insights for curriculum development and teacher preparation in Islamic educational settings. While the results are promising, limitations such as the focus on a single geographic area and a relatively short intervention period suggest the need for further research. Future studies should employ longitudinal designs across diverse Islamic educational settings to assess long-term impacts and cultural variability. In conclusion, the integration of religious dimensions and humanistic education in Islamic schools offers a promising framework for nurturing academically competent, ethically grounded, and socially responsible individuals. However, successful implementation requires careful consideration of curriculum development, teacher preparation, and contextual adaptation to realize the potential of this integrated approach fully.

Acknowledgment

The researcher would like to express his gratitude to UIN Sunan Kalijaga Yogyakarta, which has supported the smooth implementation of this research. We would also like to express our appreciation to the participants who actively contributed to it.

Ethical considerations

We confirm that we have obtained all consent required by the applicable law to publish any personal details or images of patients, research subjects, or other individuals used. We agree to provide the Multidisciplinary Science Journal with copies of the consent or evidence that such consent has been obtained if requested.

Conflict of interest

The researchers submit that there are no actual or potential conflicts of interest.

Funding

There was no funding for this research.

References

- Ahmad, R. H., Salleh, A. J., & Ghavifekr, S. (2016). Leadership dimensions and creativity traits of Islamic school principals: A quantitative analysis. *Malaysian Online Journal of Educational Management*, 5(1), 29–50. <https://doi.org/10.22452/mojem.vol5no1.3>
- Algahtani, F. D., Alzain, M. A., Haouas, N., Angawi, K., Alsaif, B., Kadri, A., Dkhil, M. A., Snoussi, M., & Zrieq, R. (2021). Coping during the COVID-19 pandemic in the Saudi Community: Religious attitudes, practices, and associated factors. *International Journal of Environmental Research and Public Health*, 18(16), 8651. <https://doi.org/10.3390/ijerph18168651>
- Alkouatli, C. (2023). "We're trying to raise Muslim kids, right?" muslim educators' narratives of human development. *Cognition and Instruction*, 41(1), 32–60. <https://doi.org/10.1080/07370008.2022.2073355>
- Ashraf, M. A., Tsegay, S. M., & Ning, J. (2021). Teaching global citizenship in a Muslim-majority country: Perspectives of teachers from the religious, national, and international education sectors in Pakistan. *Religions*, 12(5), 348. <https://doi.org/10.3390/rel12050348>
- Asrohah, H., & Idayatni, S. (2020). In search of gender equality in rural madrasas of Malang Raya. *Journal of Indonesian Islam*, 14(2), 387. <https://doi.org/10.15642/JIIS.2020.14.2.387-406>
- Belentsov, S. I., Fahrutdinova, A. V., Grevtseva, G. Y., & Batrachenko, E. A. (2018). Free education: Fundamentals of humanistic pedagogy (on the example of the activity of the German public figures of the second half of the XIX - the beginning of the XX centuries of F. Gansberg, L. Gurlitt, G. Sharrelman). *European Journal of Contemporary Education*, 8(1), 201–207. <https://doi.org/10.13187/ejced.2019.1.201>
- Cheng, A., Nadkarni, V. M., Mancini, M. B., Hunt, E. A., Sinz, E. H., Merchant, R. M., Donoghue, A., Duff, J. P., Eppich, W., Auerbach, M., Bigham, B. L., Blewer, A. L., Chan, P. S., & Bhanji, F. (2018). Resuscitation education science: Educational strategies to improve outcomes from Cardiac arrest: A scientific statement from the American Heart Association. *Circulation*, 138(6), 90–102. <https://doi.org/10.1161/CIR.0000000000000583>
- Dahliyana, A., Budimansyah, D., Nurdin, E. S., & Suryadi, A. (2021). The challenges of civic and moral education for young Muslim Indonesians. *International Journal of Early Childhood Special Education*, 13(2), 368–374. <https://doi.org/10.9756/INT-JECSE/V13I2.211073>
- Fuadi, A., & Suyatno, S. (2020). Integration of nationalistic and religious values in Islamic education: A Study in an integrated Islamic school. *Randwick International of Social Science Journal*, 1(3), 555–570. <https://doi.org/10.47175/rissj.v1i3.108>
- Hamzani, A. I., Aryani, F. D., Bawono, B. T., Khasanah, N., & Yunus, N. R. (2023). Non-procedural dispute resolution: Study of the restorative justice approach tradition in Indonesian society. *International Journal of Offender Therapy and Comparative Criminology*, 1(2), 1–9. <https://doi.org/10.1177/0306624X231165425>
- Hashimov, E. (2015). Qualitative data analysis: A methods sourcebook and the coding manual for qualitative researchers. *Technical Communication Quarterly*, 24(1), 109–112. <https://doi.org/10.1080/10572252.2015.975966>
- Hermione, A., & Arifin, I. (2020). Contextual character education for students in the senior high school. *European Journal of Educational Research*, 9(3), 1009–1023. <https://doi.org/10.12973/eu-jer.9.3.1009>
- Herrmann, B., & Rundshagen, V. (2020). Paradigm shift to implement SDG 2 (end hunger): A humanistic management lens on the education of future leaders. *The International Journal of Management Education*, 18(1), 1003–1012. <https://doi.org/10.1016/j.ijme.2020.100368>

- Hollweck, T. (2015). Robert K. Yin. (2014). Case study research design and methods (5th ed.). *Canadian Journal of Program Evaluation*, 30(1), 108–110. <https://doi.org/10.3138/cjpe.30.1.108>
- Ilhavenil, N., & Logeswaran, A. K. (2023). 'Teacher, am I empathetic?' Instilling empathy in adolescents. *Malaysian Journal of Learning and Instruction*, 20(2), 98–104. <https://doi.org/10.32890/mjli2023.20.1.6>
- Lahmar, F. (2020). Islamic education: An Islamic "wisdom-based cultural environment" in a Western context. *Religions*, 11(8), 409–415. <https://doi.org/10.3390/rel11080409>
- Lewis, S. (2015). Qualitative inquiry and research design: Choosing among five approaches. *Health Promotion Practice*, 16(4), 473–475. <https://doi.org/10.1177/1524839915580941>
- Lubis, M. A. (2015). Effective implementation of the integrated Islamic education. *Global Journal Al Thaqafah*, 5(1), 59–68. <https://doi.org/10.7187/GJAT792015.05.01>
- Marini, A., Safitri, D., Sujarwo, Zahari, M., Lestari, I., Rihatno, T., Nuraini, S., Iskandar, R., & Ibrahim, N. (2021). Model of character building applied in physical education and sports classes: A case study in Indonesia. *Journal of Physical Education and Sport*, 21(2), 2389–2394. <https://doi.org/10.7752/jpes.2021.s4320>
- Mediawati, A. S., Yosep, I., & Mardhiyah, A. (2022). Life skills and sexual risk behaviors among adolescents in Indonesia: A cross-sectional survey. *Belitung Nursing Journal*, 8(2), 132–138. <https://doi.org/10.33546/bnj.1950>
- Mu'ti, A. (2023). Pluralistic Islamic religious education: A vision for Indonesia. *The Review of Faith & International Affairs*, 21(2), 121–127. <https://doi.org/10.1080/15570274.2023.2200280>
- Muhammad Munadi. (2020). Systematizing internationalization policy of higher education in State Islamic Universities. *International Journal of Higher Education*, 9(6), 96–106. <https://doi.org/10.5430/ijhe.v9n6p96>
- Muhtar, T., & Dallyono, R. (2020). Character education from the perspectives of elementary school physical education teachers. *Jurnal Cakrawala Pendidikan*, 39(2), 395–408. <https://doi.org/10.21831/cp.v39i2.30647>
- Nuryadi, M. H., Zamroni, Z., & Suharno, S. (2020). The pattern of the teaching of multiculturalism-based civics education: A case study at higher education institutions. *European Journal of Educational Research*, 9(2), 799–807. <https://doi.org/10.12973/eu-er.9.2.799>
- Pandia, W. S. S., Suryani, A. O., & Irwanto, I. (2023). Post-COVID adaptation: Students' mental health and higher education system in Indonesia. *International Journal of Business, Economics, and Social Development*, 4(4), 262–267. <https://doi.org/10.46336/ijbesd.v4i4.526>
- Qomaruzzaman, B., & Busro, B. (2021). Doing hijrah through music: A religious phenomenon among the Indonesian Musician community. *Studia Islamika*, 28(2), 385–412. <https://doi.org/10.36712/sdi.v28i2.13277>
- Rahman, N. A., Zabidi, F. N. M., & Halim, L. (2020). Integration of tawhidic elements for environmental education from the teachers' perspectives. *Religions*, 11(8), 394. <https://doi.org/10.3390/rel11080394>
- Resnik, D. B., & Shamo, A. E. (2011). The Singapore statement on research integrity. *Accountability in Research*, 18(2), 71–75. <https://doi.org/10.1080/08989621.2011.557296>
- Sahin, A. (2018). Critical issues in Islamic education studies: Rethinking Islamic and Western liberal secular values of education. *Religions*, 9(11), 335. <https://doi.org/10.3390/rel9110335>
- Sarina, T., & Kasim, A. T. (2022). A case study of Malaysian Islamic education novice teachers' experiences of student-centered learning. *Journal of Positive School Psychology*, 1(5), 78–89. <https://www.journalppw.com/index.php/jpsp/article/view/7693/5037>
- Setiawan, T., De Jong, E. B., Scheepers, P. L., & Sterkens, C. J. (2020). The relationship between religious dimensions and support for interreligious conflict in Indonesia. *Archive for the Psychology of Religion*, 42(2), 244–261. <https://doi.org/10.1177/0084672419878824>
- Shakman, K., Goodyear, L., DeLisi, J., Schiavo, N., Mansori, S., Rodriguez, S., McMahon, T., Louie, J., Greller, S., Fitzhugh, G., & Irwin, C. (2017). Book review: Qualitative research & evaluation methods: Integrating theory and practice (4th ed.). *American Journal of Evaluation*, 38(4), 603–605. <https://doi.org/10.1177/1098214016689486>
- Suhandi, & Jaafar, A. (2020). Religion, morals, and modernisation of urban society: a study on the roles of religion in youth development in Lampung, Republic of Indonesia. *Asian Social Science and Humanities Research Journal (ASHREJ)*, 2(2), 109–116. <https://doi.org/10.37698/ashrej.v2i2.47>
- Suhayib, & Ansyari, M. F. (2023). Design of Islamic religious education: Purposes, alignment of curriculum components, and contexts. *British Journal of Religious Education*, 45(4), 382–393. <https://doi.org/10.1080/01416200.2023.2220940>
- Tuna, M. H. (2020). Islamic religious education in contemporary Austrian society: Muslim teachers dealing with controversial contemporary topics. *Religions*, 11(8), 392–402. <https://doi.org/10.3390/rel11080392>
- Widdah, M. El. (2022). Madrasah management strategy as the educational foundation for the religious cadre. *International Journal of Learning, Teaching and Educational Research*, 21(11), 227–242. <https://doi.org/10.26803/ijlter.21.11.13>
- Widyasari, V., Prabandari, Y. S., & Utarini, A. (2020). Training intervention to improve hygiene practices in an Islamic boarding school in Yogyakarta, Indonesia: A mixed-method study. *PLOS ONE*, 15(5), 233–240. <https://doi.org/10.1371/journal.pone.0233267>