


# Local wisdom unveiled: A global exploration of indigenous knowledge for sustainability and education



Kurniawan Arizona<sup>ab</sup>  | Joni Rokhmat<sup>a</sup>  | Agus Ramdani<sup>a</sup>  | Gunawan Gunawan<sup>a</sup>  |  
Aa Sukarso<sup>a</sup>  | Ramdhani Sucilestari<sup>ab</sup> 

<sup>a</sup>University of Mataram, Mataram, Nusa Tenggara Barat, Indonesia.

<sup>b</sup>Universitas Islam Negeri Mataram, Mataram, Nusa Tenggara Barat, Indonesia.

**Abstract** This study systematically reviews and analyzes the growing body of literature on local wisdom, focusing on its relevance to global challenges such as sustainability, education, and environmental management. Using a systematic literature review (SLR) combined with bibliometric analysis and the PRISMA approach, 438 articles from the Scopus database, published between 2011 and 2025, were analyzed. The findings show a significant rise in publications since 2016, with a peak in 2024, led primarily by Indonesia, followed by contributions from Southeast Asia and Western countries. Local wisdom is predominantly discussed within the social sciences, intersecting with fields like environmental science, character education, and disaster management. Bibliometric analysis highlighted key authors and significant publication sources, emphasizing the growing interdisciplinary relevance of local wisdom. The discussion underscores the importance of integrating local wisdom into global frameworks for sustainable development and education, while noting the limitations of the study, such as the dominance of English-language publications and regional research concentration. Recommendations include expanding geographic and disciplinary inclusivity, incorporating more local perspectives, and fostering international collaboration to enhance global understanding of indigenous knowledge systems, offering valuable insights for addressing the challenges of sustainability and cultural preservation.

**Keywords:** bibliometric analysis, disaster management, local perspective, sustainability, systematic literature review

## 1. Introduction

Local wisdom, which embodies the traditional knowledge, practices, and values passed down through generations, plays an increasingly pivotal role in addressing contemporary global challenges (Putra et al., 2024), particularly in sustainability (Azwar et al., 2023; Jaelani et al., 2025), education (Hidayati et al., 2020; Suprpto et al., 2021), and environmental management (Eraku et al., 2025; Pangemanan et al., 2024; Zamzami et al., 2025). As societies face complex issues such as climate change (Andung et al., 2024; Hamid et al., 2021), resource depletion (Aspan et al., 2023; Boni et al., 2024; Komang Astina et al., 2022), and social inequities (Kartika et al., 2024; Suarjana et al., 2022), there is a growing recognition that indigenous knowledge systems, rooted in *local wisdom*, offer valuable solutions for sustainable development (Rahim et al., 2023; Zamzami et al., 2025), disaster mitigation (Marhadi et al., 2024; Purwaningsih et al., 2024), and fostering social cohesion (Istianti et al., 2025; Uyun et al., 2024). Despite its critical relevance, the body of research on *local wisdom* remains fragmented, with contributions spread across various disciplines and geographical regions. The importance of compiling and synthesizing this body of literature has never been greater, as it can provide a comprehensive understanding of how *local wisdom* can be integrated into global frameworks to inform policymaking (Muhamad et al., 2025), education reform (Muhamad et al., 2025), and community development (Sirinon, 2024; Supriadi et al., 2020).

The primary problem addressed by this study is the lack of a comprehensive and systematic analysis of *local wisdom* research, which hinders the full recognition of its potential contributions to global sustainability (Armanto et al., 2025; Smith et al., 2020) and social development (Rahman et al., 2022; Utomo et al., 2023). While there has been significant interest in *local wisdom* in certain regions, especially in Southeast Asia, the existing literature is dispersed and lacks a consolidated overview of key trends, major contributors, and thematic focuses. As a result, this study aims to fill this gap by conducting a systematic literature review (SLR) and bibliometric analysis using the PRISMA (Preferred Reporting Items for Systematic Reviews and Meta-Analyses) approach. The purpose of this study is to identify the growth of scholarly interest in *local wisdom*, analyze the evolution of its application across various fields, and provide a deeper understanding of the key themes and connections within the literature (Fitriah et al., 2025; N. Lestari & Suyanto, 2024).

This research also seeks to explore the connections between *local wisdom* and other key concepts such as sustainability, character education, disaster management, and environmental science. By focusing on articles published between 2011 and

2025, the study examines how the discourse around *local wisdom* has evolved over time and how it intersects with these important areas. The study's objective is to analyze the number of publications, institutional affiliations, geographic contributions, and key themes in the field of *local wisdom*. Additionally, bibliometric techniques will be employed to analyze citation patterns, identify the most influential works, and track emerging trends in the research landscape. This will help contextualize *local wisdom* within the broader academic and social frameworks and illustrate its interdisciplinary relevance.

The research questions (RQ) addressed in this study are: [RQ1] What are the trends in academic publications related to *local wisdom*, and how has the volume of publications evolved over time? [RQ2] Which countries and institutions have made the most significant contributions to the body of *local wisdom* research?, and [RQ3] How does local wisdom intersect with key themes such as sustainability, education, and disaster management in the academic literature, and what are the major bibliometric trends, including citation patterns and key authors in this field?

This study is significant because it not only synthesizes the existing research but also provides a comprehensive overview of how *local wisdom* has been integrated into academic discourse (Mahaswa & Syaja, 2025; Muhamad et al., 2025; Sholehuddin et al., 2025) and global conversations on sustainability and development (Legowo et al., 2024; Rizal et al., 2022; Widen et al., 2024). By addressing the gaps in the current literature, this research will contribute to advancing the scholarly understanding of *local wisdom* and highlight its potential to offer practical solutions to the pressing challenges of the 21st century. Ultimately, this study seeks to provide a framework for future research, encourage interdisciplinary studies, and promote the integration of *local wisdom* into policy, education, and social initiatives worldwide.

## 2. Materials and Methods

This study employs a systematic literature review (SLR) methodology combined with bibliometric analysis to explore the body of literature on local wisdom. The article selection process is outlined in Figure 1, which illustrates the steps of article identification, screening, eligibility assessment, and inclusion. The review adheres to the PRISMA (Preferred Reporting Items for Systematic Reviews and Meta-Analyses) guidelines to ensure transparency and consistency throughout the research process.

The research began with a comprehensive search in the Scopus database on September 22, 2025, using the search string "local wisdom" applied to titles, abstracts, or keywords. The search was limited to journal articles and conference papers, excluding books, reviews, and data papers. This approach was intended to focus the search on relevant articles. The initial search resulted in 2,856 articles. The following screening steps were applied to refine the results according to the study's criteria.

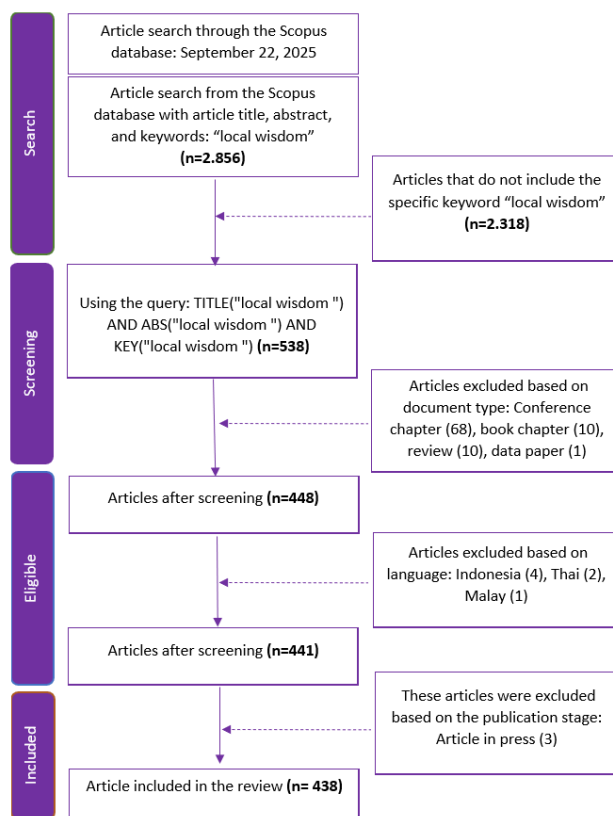


Figure 1 SLR (systematic literature review) information flow on local wisdom.

In the first stage, title and abstract screening was conducted to ensure that the term "local wisdom" appeared in the title, abstract, or keywords. This process resulted in 538 articles that met the initial inclusion criteria. The remaining articles were then subjected to full-text screening to evaluate their relevance to the research focus. This stage resulted in 448 articles that met the inclusion criteria. The next step involved language screening, excluding articles written in languages other than English, particularly Indonesian, Thai, and Malay, leaving 441 articles eligible for further review. Additionally, articles listed as "in press" were excluded from the final dataset, bringing the total number of articles to 438 that met the criteria for inclusion in the literature review.

For bibliometric analysis, bibliometric techniques were used to assess publication trends, citation patterns, and the overall impact of the selected articles within the field of local wisdom. The combination of SLR and bibliometric analysis provided a robust framework for understanding the academic landscape of local wisdom.

The PRISMA process involved two independent reviewers who screened titles and abstracts. Any disagreements between the reviewers were resolved through discussion, and if necessary, a third reviewer was consulted. Full-text articles were also screened independently by the same pair of reviewers. No quality or risk-of-bias assessment was performed, and this is acknowledged as a limitation of the study.

Thus, while the research focuses exclusively on the term "local wisdom," the search strategy ensures a comprehensive coverage of relevant literature, providing a thorough mapping of the role and development of local wisdom within the academic context.

### 3. Results

#### 3.1. Trends in Local Wisdom Research and Publication Patterns

Figure 2 illustrates the distribution of articles related to local wisdom based on publication years from 2011 to 2025. In the early years (2011-2015), the number of published articles was relatively low, with minimal fluctuations ranging from 1 to 4 articles. However, since 2016, there has been a significant increase in publication volume (8 articles), reflecting a growing interest in the topic. The peak of publications occurred in 2024, with 82 articles, showing a substantial surge in attention towards local wisdom that year. Although there was a slight decrease in 2025 (57 articles), publications remained at a relatively high level. This trend reflects a rapid increase in academic interest in local wisdom, making it an increasingly relevant topic that has garnered greater attention among researchers and educators in recent years.

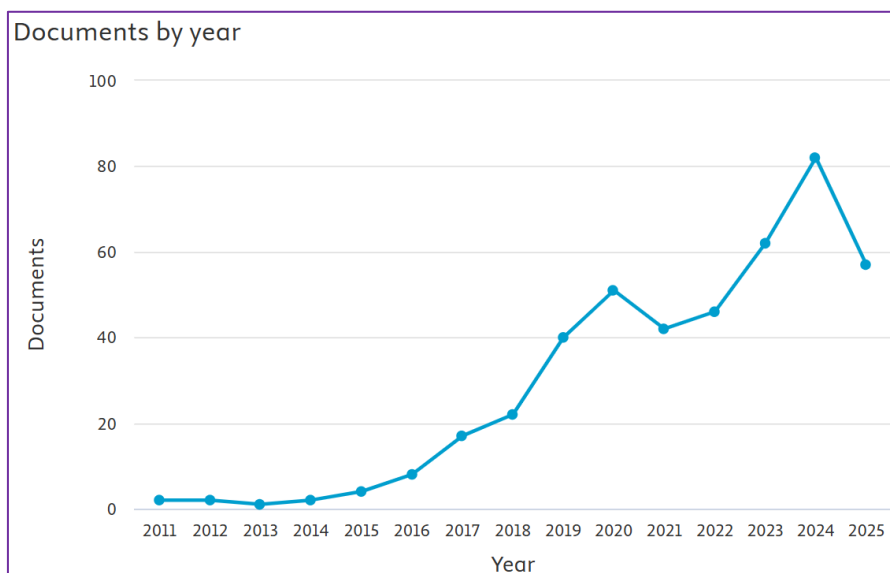


Figure 2 Distribution of local wisdom articles by year.

#### 3.2. Geographical and Institutional Contributions to Local Wisdom Research

Figure 3 shows the distribution of articles related to local wisdom by country. The chart reveals that Indonesia dominates the publications with a significantly higher number of articles, totaling 408. This is followed by Malaysia (24 articles) and Thailand (23 articles), each contributing smaller yet significant numbers. Other countries, such as Australia (5 articles), Japan (3 articles), South Africa (3 articles), Taiwan (3 articles), the United States (3 articles), Belgium (2 articles), and Brunei Darussalam (1 article) also contributed, although their publication numbers were much lower, reflecting Indonesia's dominance in research and publications on local wisdom. This chart highlights Indonesia's leading role in the literature on local wisdom, while other countries contribute in more limited numbers.



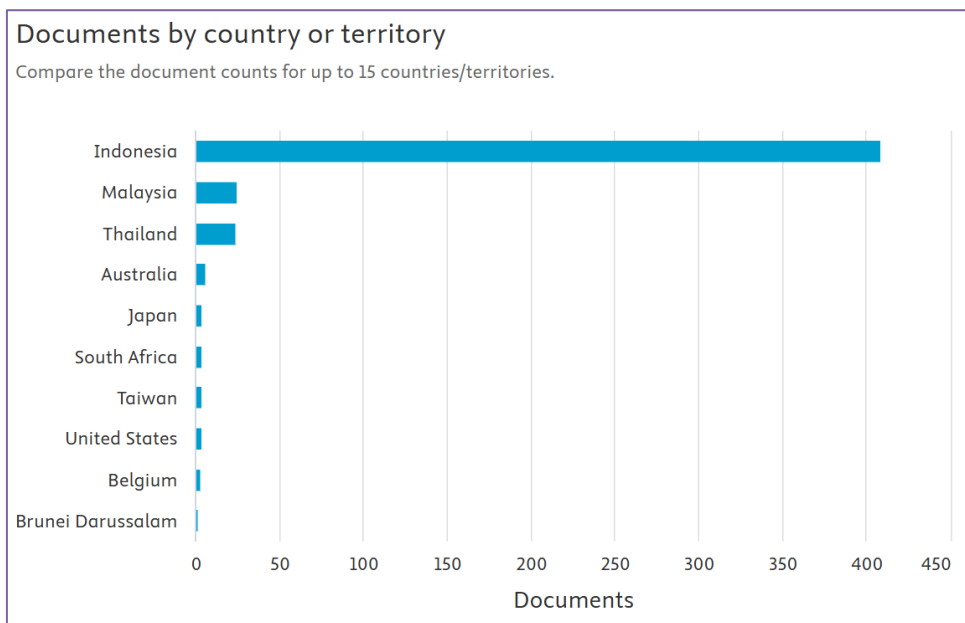


Figure 3 Distribution of Local Wisdom Articles by Country.

Figure 4 illustrates the distribution of articles related to local wisdom based on country affiliation. The chart shows Indonesia as the center of dominance, with numerous connections established with various countries. Malaysia and Thailand also have significant linkages, followed by countries such as China, Japan, the United States, Turkey, and India, indicating strong international involvement in publications related to local wisdom. Countries like Brunei Darussalam, Australia, South Africa, and Kazakhstan have also contributed to this literature, albeit with more limited involvement. The connections depicted in this chart reflect the collaboration and international attention surrounding the topic of local wisdom, with Indonesia as the central hub for research and discussion.

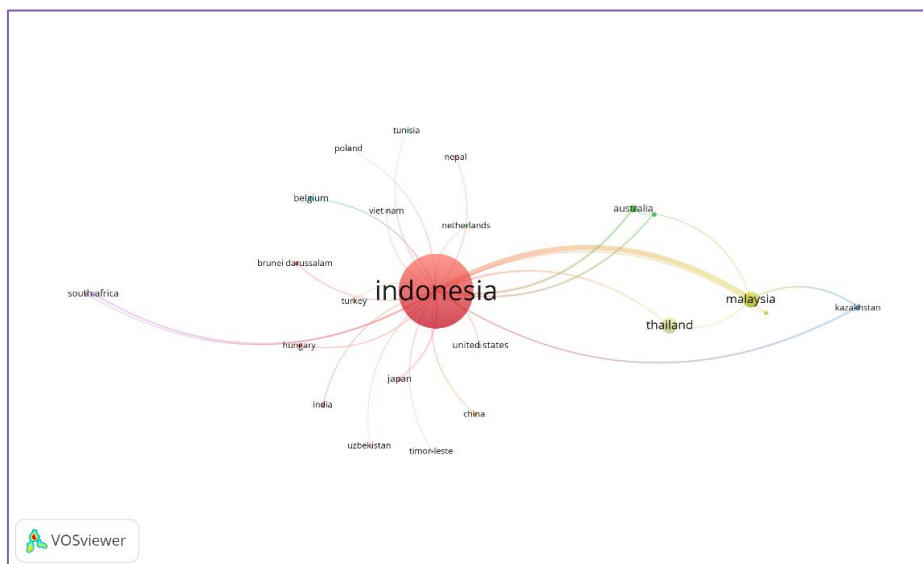


Figure 4 Distribution of Local Wisdom Articles by Country Affiliation.

Figure 5 illustrates the distribution of articles related to local wisdom based on institutional affiliation. The chart shows that Universitas Negeri Yogyakarta dominates the publications with the highest number of articles (25 articles), followed by Universitas Sebelas Maret (21 articles). These two universities have made significant contributions to publications on local wisdom. In addition, Universitas Negeri Semarang (17 articles), Universitas Negeri Malang (16 articles), and Universitas Sumatera Utara (13 articles) also recorded relatively high numbers, indicating their important role in this research. Other universities, such as Hasanuddin University (12 articles), Universitas Pendidikan Indonesia (12 articles), Universitas Negeri Makassar (12 articles), Universitas Padjadjaran (10 articles), and Universitas Gadjah Mada (9 articles), have also contributed, albeit with smaller numbers. This chart reflects that universities in Indonesia, particularly those in Java and Sumatra, play a dominant role in research related to local wisdom.



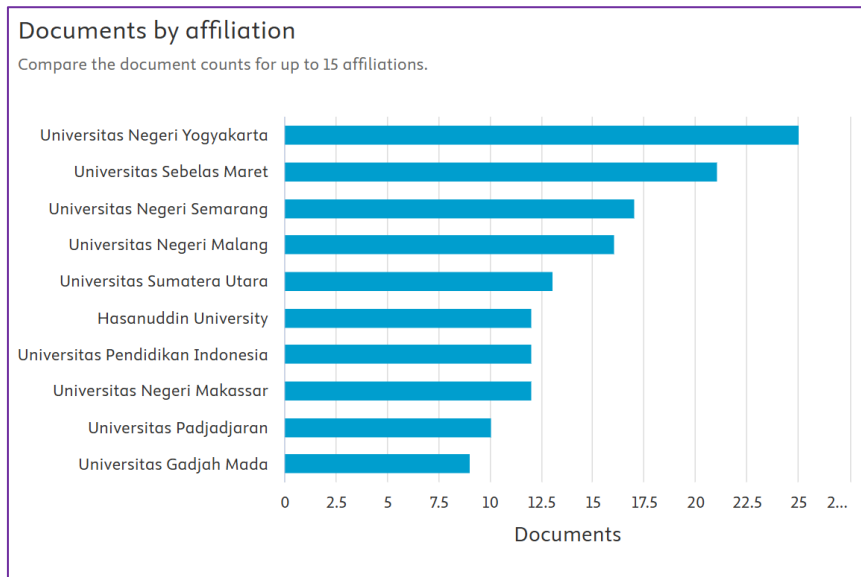


Figure 5 Distribution of Local Wisdom Articles by Affiliation.

### 3.3. Bibliometric Analysis and Key Themes in Local Wisdom Literature

Figure 6 illustrates the distribution of articles related to local wisdom based on publication sources from 2015 to 2025. The chart shows the trend of articles published by various journals, with some journals exhibiting a significant increase. The *International Journal of Innovation Creativity and Change* recorded the highest percentage, with a sharp increase since 2019, showing a significant surge in 2024 and 2025. The *Journal of Ecohumanism* also showed a notable increase in publications, particularly in 2021 and 2022. Other journals, such as *Jurnal Pendidikan IPA Indonesia*, *International Journal of Instruction*, and *International Journal of Scientific and Technology Research*, experienced fluctuations, though some began to show a stable increase in recent years. Journals like *Educational Process International Journal*, *Journal of Language Teaching and Research*, and *Ecology Environment and Conservation* maintained relatively smaller and stable publication numbers throughout the period. Overall, this chart reflects the growing and sustained interest in local wisdom, with several journals becoming major sources of publication in recent years, highlighting the increasing relevance of this topic in the field.

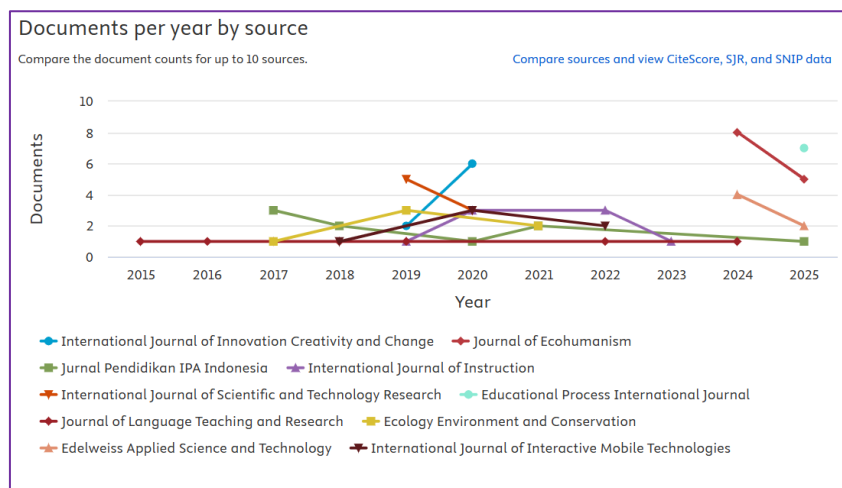


Figure 6 Distribution of Local Wisdom Articles by Source.

Figure 7 illustrates the distribution of articles related to local wisdom based on subject fields. The chart shows that Social Sciences dominate the publications, with the largest percentage at 35.8%, indicating that local wisdom is widely discussed within the context of social sciences. Other fields contributing significantly include Arts and Humanities with 11.4%, and Environmental Science with 10.2%. The Engineering field contributed 6.7%, followed by Agricultural and Environmental Science, and Computer Science, each contributing 5.2%. Other fields such as Business, Management, Economics, and Medicine made smaller contributions, ranging from 2.9% to 2.4%. Additionally, the "Other" category recorded a contribution of 12.2%. This chart demonstrates that local wisdom is a highly relevant topic within the social sciences, but it also engages various other disciplines, including environmental science, engineering, and agriculture.



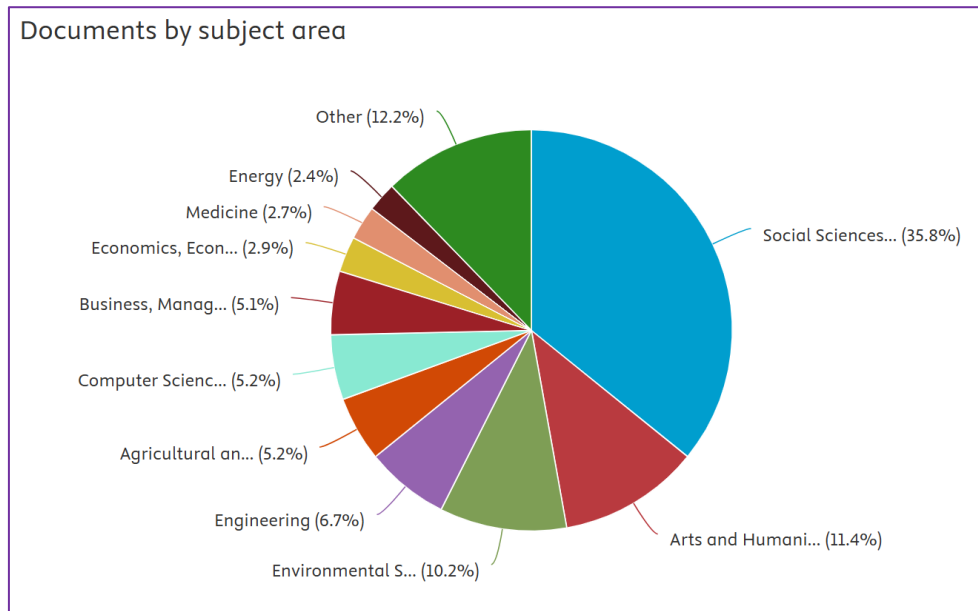


Figure 7 Distribution of Local Wisdom Articles by Subject Area.

Figure 8 illustrates the distribution of articles related to local wisdom by author. In this chart, Sumarni leads with the highest number of publications, recording more than 6 articles. She is followed by Kuswanto, H., Sibarani, R., and Suastra, I.W., each making significant contributions with more than 3 articles. Other authors, such as Andayani, Astina, I.K., Citrawn, I.W., Dienaputra, R.D., Dwiningrum, S.I.A., and Ismail, R., also contributed with smaller numbers of publications, each having around 2 to 3 articles. This chart highlights Sumarni as the leading author in the field of local wisdom, while other authors also make significant contributions, albeit with a more limited number of articles.

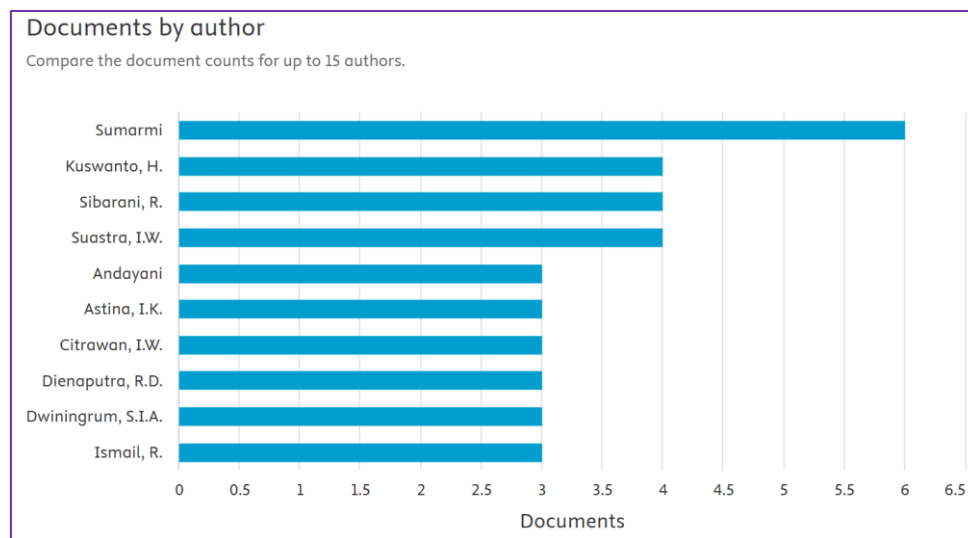


Figure 8 Distribution of Local Wisdom Articles by Author.

Figure 9 illustrates the relationship between keywords related to local wisdom identified in the literature by the authors. The keyword *local wisdom* serves as the central node in this network, surrounded by various interconnected concepts. Several key terms connected to local wisdom include *character education*, *sustainability*, *tourism*, *human*, *ecotourism*, *knowledge*, and *disaster mitigation*, indicating that local wisdom is often discussed in the context of character education, sustainability, tourism, and disaster mitigation. Additionally, keywords such as *critical thinking*, *learning*, *multicultural education*, *gender*, *COVID-19*, and *students* reflect the connection between local wisdom and education, the development of 21st-century skills, and contemporary challenges such as the pandemic. Other fields such as *halal tourism*, *augmented reality*, *creative economy*, *science learning*, *conservation*, *Islamic law*, and *inheritance* also show their relevance to the topic of local wisdom, highlighting the involvement of various disciplines in this research. Overall, this chart depicts the complex and multidimensional nature of the topic of local wisdom, with various interconnected concepts relevant to many aspects of life, particularly in the context of character education and sustainable development.

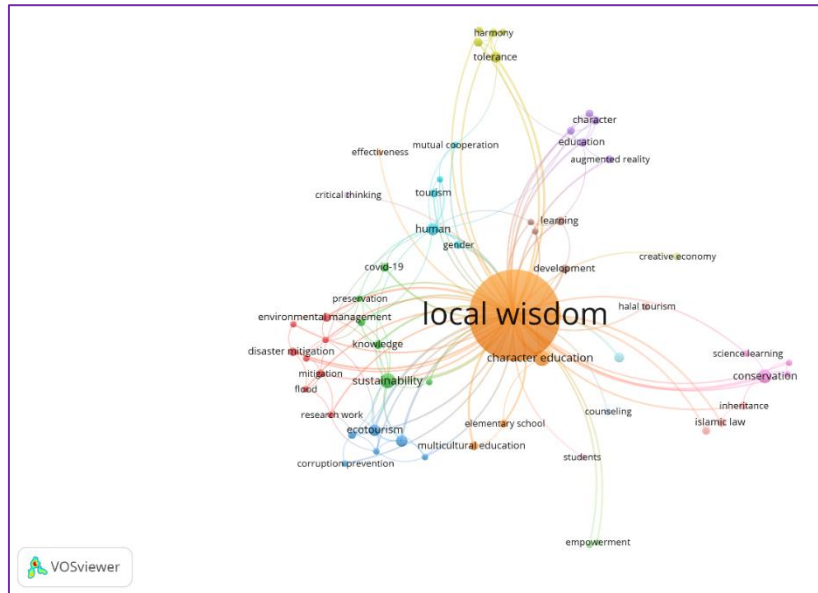


Figure 9 Relationship of Local Wisdom Keywords by Author.

Table 1 shows the relationship between frequently used keywords in articles related to local wisdom, according to the authors, along with their frequency of occurrence and total link strength. The keyword *local wisdom* appears with the highest frequency, 384 times, and has a total link strength of 345, indicating that this topic is the primary keyword in the analyzed literature. Other frequently appearing keywords include *Human* with 9 occurrences and a total link strength of 53, and *Sustainability* with 13 occurrences and a total link strength of 37, demonstrating that these topics are highly relevant within the context of local wisdom. Other related keywords, such as *Ecotourism* and *Sustainable development*, each appearing 8 times with link strengths of 36 and 29, respectively, reflect the connection between local wisdom and environmental issues as well as sustainable development.

Additionally, keywords such as *Conservation*, *Human experiment*, and *Cultural tradition* are also recorded with lower frequencies, yet they still hold significant relevance to the topic of local wisdom, with link strengths ranging from 18 to 17. *Character education* and *Indigenous knowledge*, although appearing less frequently with 14 and 4 occurrences, respectively, still contribute importantly to the discussion of local wisdom, with a total link strength of 16. This table illustrates how various concepts, such as sustainability, conservation, cultural traditions, and character education, are closely connected to local wisdom, highlighting topics that play a crucial role in this discourse.

Table 1 Relationship of Local Wisdom Keywords According to the Authors.

No	Keyword	Occurences	Total link strength
1	Local wisdom	384	345
2	Human	9	53
3	Sustainability	13	37
4	Ecotourism	8	36
5	Sustainable development	8	29
6	Conservation	11	18
7	Human experiment	3	18
8	Cultural tradition	3	17
9	Character education	14	16
10	Indigenous knowledge	4	16

Table 2 presents a list of the most cited articles related to local wisdom. The first most-cited article is "Exploring the implementation of local wisdom-based character education among Indonesian higher education students," authored by Hidayati, N.A., Waluyo, H.J., Winarni, R., and Suyitno, published in the *International Journal of Instruction* in 2020, with 78 citations. The second most-cited article is "Development of social studies learning model based on local wisdom in improving students' knowledge and social attitude" by Uge, S., Neolaka, A., and Yasin, M., published in *Studies in Higher Education* in 2019, with 75 citations.

Next, the article "The development of local wisdom-based natural science module to improve science literacy of students," authored by Setiawan, B., Innatesari, D.K., Sabtiawan, W.B., and Sudarmin, S., published in *Jurnal Pendidikan IPA Indonesia* in 2017, has 62 citations. The article "Local wisdom-based disaster recovery model in Indonesia" by Kusumasari, B. and Alam, Q., published in *Disaster Prevention and Management: An International Journal* in 2012, also recorded 62 citations.

The article "Analysis of students' critical thinking skills in terms of gender using science teaching materials based on the 5E learning cycle integrated with local wisdom" by Ramdani, A., Jufri, A.W., Gunawan, Fahrurrozi, M., and Yustiqvar, M., published in *Jurnal Pendidikan IPA Indonesia* in 2021, received 47 citations. Other articles that recorded significant citation counts cover various aspects of local wisdom, including its impact on education, interfaith tolerance, and entrepreneurial development. Overall, these articles demonstrate the significant impact of local wisdom in various fields such as character education, disaster mitigation, and social development, reflecting the relevance of local values in today's global and social context.

**Table 2** Most Cited Local Wisdom Articles.

No	Article Title	Authors	Journal Source	Year	Number of Citations
1	Exploring the implementation of local wisdom-based character education among Indonesian higher education students	Hidayati, N.A., Waluyo, H.J., Winarni, R., Suyitno	International Journal of Instruction, 13(2), pp. 179–198	2020	78
2	Development of social studies learning model based on local wisdom in improving students' knowledge and social attitude	Uge, S., Neolaka, A., Yasin, M.	Studies in Higher Education, 35(6), pp. 723–740	2019	75
3	The development of local wisdom-based natural science module to improve science literacy of students	Setiawan, B., Innatesari, D.K., Sabtiawan, W.B., Sudarmin, S.	Jurnal Pendidikan IPA Indonesia, 6(1), pp. 49–54	2017	62
4	Local wisdom-based disaster recovery model in Indonesia	Kusumasari, B., Alam, Q.	Disaster Prevention and Management an International Journal, 21(3), pp. 351–369	2012	62
5	Analysis of students' critical thinking skills in terms of gender using science teaching materials based on the 5e learning cycle integrated with local wisdom	Ramdani, A., Jufri, A.W., Gunawan, Fahrurrozi, M., Yustiqvar, M.	Jurnal Pendidikan IPA Indonesia, 10(2), pp. 187–199	2021	47
6	The Role of Intercultural Competence and Local Wisdom in Building Intercultural and Inter-religious Tolerance	Eko, B.S., Putranto, H.	Journal of Intercultural Communication Research, 48(4), pp. 341–369	2019	47
7	Development of E-modules based on local wisdom in central learning model at kindergartens in Jambi city	Sofyan, H., Anggereini, E., Saadiah, J.	European Journal of Educational Research, 8(4), pp. 1137–1143	2019	45
8	Tolerance between religions through the role of local wisdom and religious moderation	Pajarianto, H., Pribadi, I., Sari, P.	Hts Teologiese Studies Theological Studies, 78(4), a7043	2022	43
9	Batak Toba society's local wisdom of mutual cooperation in Toba Lake area: a linguistic anthropology study	Sibarani, R.	International Journal of Human Rights in Healthcare, 11(1), pp. 40–55	2018	43
10	Indonesian curriculum reform in policy and local wisdom: Perspectives from science education	Suprpto, N., Prahani, B.K., Cheng, T.H.	Jurnal Pendidikan IPA Indonesia, 10(1), pp. 69–80	2021	41

#### 4. Discussion

The expanding body of literature on local wisdom highlights its increasing importance in addressing contemporary global challenges, particularly in the domains of sustainability, education, and environmental management. This discussion is structured around three key aspects: publication trends, geographical patterns, and thematic clusters, with a focus on their implications for policy, curriculum design, and future research directions.

##### 4.1. Publication trends

The notable rise in publications related to local wisdom since 2016 signals a growing recognition of the value of indigenous knowledge in fostering sustainable development and addressing pressing issues such as climate change, cultural preservation, and community resilience. The peak in 2024, with 82 articles published, reflects heightened academic attention to local wisdom. This trend is consistent with broader global shifts that emphasize the integration of indigenous knowledge into mainstream discourses on environmental sustainability and disaster mitigation (Hos et al., 2021; Ikbal et al., 2023). Despite a slight decline in publications in 2025 (57 articles), the overall increase demonstrates sustained academic interest in local

wisdom, affirming its significance in tackling global challenges (Andung et al., 2024; Muliadi et al., 2017). As academic interest in this field expands, it becomes clear that local wisdom offers valuable insights into addressing pressing global issues (Yoesoef & Dewi, 2023).

#### 4.2. Geographical patterns

Geographically, Indonesia dominates the body of literature on local wisdom, contributing 408 articles. This dominance is attributed to Indonesia's rich cultural heritage and its proactive efforts to integrate local knowledge into national policies, particularly in education, social development, and environmental sustainability (Sedayu et al., 2022; Widen et al., 2024). Other Southeast Asian countries, such as Malaysia (24 articles) and Thailand (23 articles), have also contributed significantly, though their contributions remain modest in comparison to Indonesia. The significant role played by Indonesian academic institutions, especially those in Java and Sumatra, strengthens Indonesia's position in advancing research on local wisdom, reflecting its strong cultural and environmental context (Husni, 2021; Misbah et al., 2022).

Simultaneously, there is a growing international interest in local wisdom. Scholars from countries such as Malaysia, Thailand, and even Western nations are increasingly engaging with the topic. This global interest underscores the relevance of local wisdom in fostering intercultural competence, sustainable development, and educational reform worldwide (Eko & Putranto, 2021; Rahim et al., 2023; Zamzami et al., 2025). The expanding international scope indicates that local wisdom is not confined to Southeast Asia but has become a crucial global issue.

#### 4.3. Thematic cluster

Local wisdom research spans several thematic areas, most notably environmental sustainability, multicultural education, and the development of critical thinking skills. The strong connection between local wisdom and sustainability highlights the role of indigenous knowledge in addressing climate change, ecological conservation, and disaster resilience (Saam, 2023; Setiawan et al., 2021). Additionally, local wisdom contributes to multicultural education, promoting social cohesion and intercultural competence (Jaedun & Manaf, 2020; Ngiu et al., 2023). Indigenous knowledge systems are increasingly integrated into educational frameworks, fostering a deeper understanding of sustainability, human-environment interactions, and cultural diversity (Fauziah et al., 2023; Wahyudie et al., 2021).

The thematic focus of local wisdom research also intersects with the development of critical thinking and problem-solving skills. This suggests that local wisdom is not only valuable for cultural preservation but also for shaping global educational systems that prioritize 21st-century skills, such as critical thinking, sustainability, social responsibility, and character (Arizona et al., 2025; Rahayu, 2019; Ramdani et al., 2021). By incorporating local wisdom into curricula, there is potential to empower students to address the complex challenges of the 21st century through more holistic (Fauziah et al., 2023) and inclusive (Ngiu et al., 2023) approaches to learning.

#### 4.4. Implication for policy and curriculum design

The growing body of literature on local wisdom provides critical insights for policy and curriculum design. From a policy perspective, local wisdom can inform sustainable development practices, especially in environmental management and disaster mitigation. By integrating indigenous knowledge into policy frameworks, policymakers can enhance the effectiveness of environmental conservation efforts, fostering resilience and adaptive capacities in local communities (Fauziah et al., 2023; Wahyuningtyas et al., 2022).

In curriculum design, integrating local wisdom into educational frameworks can enrich students' understanding of sustainability, multiculturalism, and social responsibility. Incorporating indigenous knowledge into education systems not only preserves cultural heritage but also equips students with the skills needed to address the complex challenges facing the world today (Andriyanto et al., 2025; Rokayah et al., 2017). This integration can foster a more inclusive and holistic approach to education, promoting social cohesion and a deeper understanding of human-environment relationships (Ngiu et al., 2023; Pearnpitak et al., 2024).

#### 4.5. Limitations and Future Research Directions

While this study provides valuable insights into the trends, geographical patterns, and thematic clusters in local wisdom research, several limitations must be acknowledged. The focus on articles published in English and indexed in major international databases may exclude valuable insights from local and regional sources. Future research should aim to include perspectives from other regions and languages to provide a more comprehensive understanding of local wisdom in diverse cultural contexts.

Furthermore, there is a need for interdisciplinary research that bridges the gap between local wisdom and modern scientific, environmental, and educational paradigms. This would ensure that indigenous knowledge continues to inform global solutions, especially in the areas of sustainability, climate change, and social development (Rahim et al., 2023; Yoesoef et al.,

2023). Future studies should also expand the geographical and disciplinary scope of research on local wisdom, fostering international collaboration and enhancing our collective understanding of indigenous knowledge.

## 5. Conclusions

This study highlights the increasing academic interest in *local wisdom*, particularly in addressing global challenges such as sustainability, education, and environmental management. The findings show a significant rise in publications on *local wisdom* since 2016, with Indonesia leading the field, followed by contributions from Southeast Asia and select Western countries. The research primarily focuses on social sciences, with notable intersections in environmental science, character education, and disaster mitigation, indicating the broad relevance of *local wisdom* across multiple domains. However, the study also reveals limitations, including the predominance of English-language publications and a regional concentration of research, which may restrict a global understanding of the topic. To address these gaps, future research should expand geographically and include more local perspectives, promote interdisciplinary studies that integrate indigenous knowledge with modern scientific frameworks, and encourage international collaboration. Ultimately, *local wisdom* remains a crucial area for research, offering valuable insights for sustainable development, education, and cultural preservation.

## Acknowledgment

Sincere gratitude is extended to the faculty members and staff of the Doctoral Program in Science Education at the Graduate School of Universitas Mataram for their invaluable guidance, support, and provision of resources throughout this research.

## Ethical considerations

Not applicable.

## Conflict of Interest

The authors declare no conflicts of interest.

## Funding

research did not receive any financial support.

## References

- Andriyanto, O. D., Panich, P., Susanto, G., Ramansyah, W., Amil, A. J., & Hardika, M. (2025). BIPA Evaluation Design Based on Local Wisdom: Specific Needs of Thai Students. *Educational Process: International Journal*, 15. <https://doi.org/10.22521/edupij.2025.15.105>
- Andung, P. A., Messakh, J. J., & Doko, M. M. (2024). Indigenous people and the meaning of the construction of disaster information literacy based on local wisdom. *Drustvena Istrazivanja*, 33(3), 455–479. <https://doi.org/10.5559/di.33.3.06>
- Arizona, K., Rokhmat, J., & Ramdani, A. (2025). Integrating islamic values and local wisdom into science education: enhancing character development in higher education. *Ulumuna*, 29(1), 398–428.
- Arizona, K., Rokhmat, J., Ramdani, A., & Sukarso, A. A. (2025). INTEGRATING ISLAMIC VALUES AND LOCAL WISDOM INTO SCIENCE EDUCATION: Enhancing Character Development in Higher Education. *Ulumuna*, 29(1), 398–428. <https://doi.org/10.20414/ujis.v29i1.1308>
- Armanto, M., Wildayana, E., & Syakina, B. (2025). Leveraging selected Local Wisdom Species in developing peatland restoration in South Sumatra, Indonesia. *Visions for Sustainability*, 2025(23), 123–146. <https://doi.org/10.13135/2384-8677/11731>
- Arsana, I. G. N. K., Dharma, I. G. B. S., Yekti, M. I., & Pariartha, P. (2022). Status of Raw Water Management Sustainability Based on Local Wisdom on Rural Water Supply in Bali, Indonesia. *Civil Engineering and Architecture*, 10(7), 3118–3134. <https://doi.org/10.13189/cea.2022.100725>
- Asmal, I., & Latief, R. (2023). The Presence of a Family Communal Space as a Form of Local Wisdom towards Community Cohesion and Resilience in Coastal Settlements. *Sustainability (Switzerland)*, 15(10). <https://doi.org/10.3390/su15108167>
- Asmal, I., Walenna, M. A., & Nas, W. (2023). Application of local wisdom in handling waste in coastal settlements as an effort to minimize waste production. *Environmental and Sustainability Indicators*, 19. <https://doi.org/10.1016/j.indic.2023.100283>
- Aspan, Z., Widodo, E., & Jurdi, F. (2023). Local Wisdom-Based Water Resources Conservation: Enhancing Local Wisdom in Society 5.0. *Hasanuddin Law Review*, 9(2), 233–248. <https://doi.org/10.20956/halrev.v9i2.4298>
- Awaluddin, A. F., & Riskianti, A. W. (2024). Collaborative Strategies for Developing an Arabic Language Curriculum Incorporating Bugis Local Wisdom. *Munaddhomah*, 5(4), 501–515. <https://doi.org/10.31538/munaddhomah.v5i4.1619>
- Azwar, H., Hanafiah, M. H., Ghani, A. A., Azinuddin, M., & Mior Shariffuddin, N. S. M. (2023). Community-based tourism (cbt) moving forward: penta helix development strategy through community local wisdom empowerment. *Planning Malaysia*, 21(1), 72–88. <https://doi.org/10.21837/PM.V21I25.1225>
- Bancong, H. (2024). Effectiveness of Local Wisdom-Based Independent Curriculum Teaching Modules in Improving Learning Outcomes Indonesia. *Journal of Ecohumanism*, 3(6), 1719–1726. <https://doi.org/10.62754/joe.v3i6.4131>
- Boni, Y., Afiat, N., Suyuti, N., Jumaidin, L. O., Melati, M., Amalia, R. R., Saranani, F., Hamid, A., Tobigo, H., & Hasddin, H. (2024). Preserving Coastal and Marine Resources: The Existence of Local Wisdom among the Bajau Tribe. *Journal of Global Innovations in Agricultural Sciences*, 12(3), 671–679. <https://doi.org/10.22194/JGIAS/24.1336>
- Budiningsih, C. A., Puspitasari, E., & Harefa, E. (2024). Development of a social sciences learning model based on local wisdom panggadakkang tupanrita by utilizing digital resources to improve prosocial behavior of elementary school: students south sulawesi province, Indonesia. *Revista de Gestao Social e*

- Ambiental*, 18(8). <https://doi.org/10.24857/rgsa.v18n8-062>
- Eko, B. S., & Putranto, H. (2019). The Role of Intercultural Competence and Local Wisdom in Building Intercultural and Inter-religious Tolerance. *Journal of Intercultural Communication Research*, 48(4), 341–369. <https://doi.org/10.1080/17475759.2019.1639535>
- Eko, B. S., & Putranto, H. (2021). Face Negotiation Strategy Based on Local Wisdom and Intercultural Competence to Promote Inter-ethnic Conflict Resolution: Case Study of Balinuraga, Lampung. *Journal of Intercultural Communication Research*, 50(5), 506–540. <https://doi.org/10.1080/17475759.2021.1898450>
- Elbaar, E. F., & Limantara, L. M. (2019). Local wisdom in capture fisheries activity in sabangau area, central kalimantan. *International Journal of GEOMATE*, 16(53), 78–85. <https://doi.org/10.21660/2019.53.40936>
- Eraku, S. S., Baruadi, M. K., Permana, A. P., & Wolok, T. (2025). Local wisdom of the molotabu beach ecotourism area in supporting environmental conservation. *Journal of Environmental Protection and Ecology*, 26(2), 644–654. <https://www.scopus.com/inward/record.uri?eid=2-s2.0-105004590871&partnerID=40&md5=7cdc8037f08e81090a38b1da1f7c188d>
- Fauziah, F. N., Saddhono, K., & Suryanto, E. (2023). Implementation of Local Wisdom-Based Indonesian Learning to Strengthen Pancasila Student Profiles (P5): Case Studies in Vocational High Schools. *Journal of Curriculum and Teaching*, 12(6), 283–297. <https://doi.org/10.5430/jct.v12n6p283>
- Firdaus, A., Lestari, F., Afiff, S. A., & Herdiansyah, H. (2023). Integration of knowledge and local wisdom for disaster resilience in Anak Krakatau volcano. *Jamba: Journal of Disaster Risk Studies*, 15(1). <https://doi.org/10.4102/jamba.v15i1.1457>
- Fitriah, L., Yuliaty, L., Parno, P., Sunaryono, S., & Taufiq, A. (2025). Indonesian Local Wisdom-Based Physics Learning: Strategy and Media. *Journal of Education Culture and Society*, 16(1), 335–364. <https://doi.org/10.15503/jecs2025.2.335.364>
- Hamid, S. K., Teniwut, W. A., Renhoran, M., & Teniwut, R. M. K. (2021). A novel framework for marine protected areas in small island regions using integrated local wisdom. *Regional Studies in Marine Science*, 45. <https://doi.org/10.1016/j.rsma.2021.101819>
- Hidayati, N. A., Waluyo, H. J., & Winarni, R. (2020). Exploring the implementation of local wisdom-based character education among Indonesian higher education students. *International Journal of Instruction*, 13(2), 179–198. <https://doi.org/10.29333/iji.2020.13213a>
- Hos, J., Roslan, S., & Supiyah, R. (2021). Disaster mitigation based on local wisdom in shifting cultivators communities. *WSEAS Transactions on Environment and Development*, 17, 237–243. <https://doi.org/10.37394/232015.2021.17.24>
- Husni, L. (2021). Character education based on local wisdom in Pancasila perspective. *Journal of Legal, Ethical and Regulatory Issues*, 24(Special Issue 1), 1–11. <https://www.scopus.com/inward/record.uri?eid=2-s2.0-85112664721&partnerID=40&md5=56044e4fe8e327e9d5d7ab6060a9ed90>
- Ikkbal, M. I., Syamsuddin, A. S. P., Korompot, R. R., & Yoshida, K. (2023). Development of a Disaster Mitigation Model Based on Local Wisdom. *Jambe Law Journal*, 6(1), 47–67. <https://doi.org/10.22437/jlj.6.1.47-67>
- Istianti, T., Asriadi AM, A. M., & Halimah, L. (2025). Evaluating the Quality of ECED Learning in Supporting the Social Emotional Development of Preschool Children Based on Local Wisdom in Indonesia. *New Educational Review*, 79(1), 223–235. <https://doi.org/10.15804/tner.2025.79.1.15>
- Jaedun, A., & Manaf, A. (2020). Dimensions of early childhood character education based on multicultural and community local wisdom. *International Journal of Instruction*, 13(2), 365–380. <https://doi.org/10.29333/iji.2020.13225a>
- Jaelani, A. K., Kusumaningtyas, R. O., & Baxtishodovich, B. (2025). Sustainable halal tourism regulation based on local wisdom in Indonesia and Uzbekistan. *Journal of Human Rights, Culture and Legal System*, 5(1), 351–377. <https://doi.org/10.53955/jhcls.v5i1.671>
- Kartika, N., Dienaputra, R. D., Machdalena, S., Nugraha, A., Suryadimulya, A. S., Yuliawati, S., & Hidayat, R. (2024). Ngalaksa Traditional Ceremony as a Local Wisdom to Maintain Community Social Interaction. *Studies in Media and Communication*, 12(3), 63–71. <https://doi.org/10.11114/smc.v12i3.6950>
- Komang Astina, I. K., Utomo, D. H., & Kurniawati, E. (2022). ECOTOURISM MANAGEMENT BASED ON LOCAL WISDOM FOR OPTIMIZING THE FUNCTION OF CAVE WATER RESOURCES AS A PREVENTION OF FLOODS AND DROUGHTS IN WAKATOBI REGENCY, INDONESIA. *Geojournal of Tourism and Geosites*, 44(4), 1222–1232. <https://doi.org/10.30892/gtg.44406-938>
- Komarlah, S., Mujayapura, M. R. R., & Arief, D. (2024). The impact of information technology (it) on cultural preservation: from definition of technology and biological gender to cultural approach and the case study of gender in inheriting local wisdom of indigenous baduy community. *Journal of Engineering Science and Technology*, 19(4), 1505–1534. <https://www.scopus.com/inward/record.uri?eid=2-s2.0-85199877697&partnerID=40&md5=4847e7555f0ec353b6312c6477525e46>
- Kusniati, R., Syam, F., Fathni, I., & Najwan, J. (2020). Legal protection to manage forest resources based on local wisdom. *Journal of Critical Reviews*, 7(9), 623–627. <https://doi.org/10.31838/jcr.07.09.123>
- Legowo, M. B., Sorongan, F. A., Subanidja, S., Indiarito, B., & Prayitno, D. (2024). Leveraging Uniqueness and Local Wisdom for Sustainable Tourism Village Development Through Technology Utilization. *Journal of Human, Earth, and Future*, 5(4), 603–613. <https://doi.org/10.28991/HEF-2024-05-04-05>
- Lestari, N., & Suyanto, S. (2024). A systematic literature review about local wisdom and sustainability: Contribution and recommendation to science education. *Eurasia Journal of Mathematics, Science and Technology Education*, 20(2), 1–19. <https://doi.org/10.29333/ejmste/14152>
- Lestari, W., Dwiningrum, S. I. A., Azhari, I., & Damanik, I. H. (2025). Evaluating the effectiveness of local wisdom-based disaster mitigation education in primary schools. *Edelweiss Applied Science and Technology*, 9(5), 2074–2091. <https://doi.org/10.55214/25768484.v9i5.7380>
- Lisdiyono, E. (2017). Exploring the strength of local wisdom in efforts to ensure the environmental sustainability. *International Journal of Civil Engineering and Technology*, 8(11), 340–347. <https://www.scopus.com/inward/record.uri?eid=2-s2.0-85036584018&partnerID=40&md5=b546e241a775f1a15a13b91f3de59693>
- Lusia, A., Kuswarno, E., Iskandar, J., & Damayani, N. A. (2025). Communicative Learning in Crisis: How Balinese Local Wisdom Shapes Educational Responses to Mount Agung's Volcanic Threats. *Educational Process: International Journal*, 17. <https://doi.org/10.22521/edupij.2025.17.352>
- M, M., Hermansyah, S., Said, S., Febrianti, D., & Rizal, A. (2024). Holistic Learning Models in Remote Areas: Enhancing Student Motivation through Local Wisdom, Parental Collaboration, Teacher Capacity, and Government Support. *Journal of Ecohumanism*, 3(7), 4548–4561. <https://doi.org/10.62754/joe.v3i7.4565>
- Mahaswa, R. K., & Syaja, A. (2025). Questioning local wisdom in Indonesian Indigenous research. *Studies in History and Philosophy of Science*, 112, 170–178. <https://doi.org/10.1016/j.shpsa.2025.07.001>
- Mahrinasari, M. S., Bangsawan, S., & Sabri, M. F. (2024). Local wisdom and Government's role in strengthening the sustainable competitive advantage of creative industries. *Heliyon*, 10(10). <https://doi.org/10.1016/j.heliyon.2024.e31133>
- Marhadi, A., Ino, L., Suraya, R. S., Janu, L., Said, T., & Gaho, R. (2024). Understanding local wisdom as specific knowledge in natural disaster mitigation: An

- empirical lessons in Tiworo, Indonesia. *Kasetsart Journal of Social Sciences*, 45(4), 1383–1392. <https://doi.org/10.34044/j.kjss.2024.45.4.31>
- Martitah, M., Sumarto, S., Yudhanti, R., & Prabowo, M. S. (2022). Legal Aspects in the Development of Tourism Villages in Wonogiri Regency Based on Local Wisdom. *Jurnal Pengabdian Hukum Indonesia*, 5(2), 275–302. <https://doi.org/10.15294/jphi.v5i2.58176>
- Misbah, M., Purwasih, D., Muhammad, N., Syahidi, K., Komariyah, L., Wahyudi, W., & Nurhayati, N. (2022). RESEARCH TREND OF LOCAL WISDOM IN PHYSICS EDUCATION FROM 2018 TO 2022: A BIBLIOMETRIC REVIEW AND ANALYSIS. *Journal of Engineering Science and Technology*, 17, 152–160. <https://www.scopus.com/inward/record.uri?eid=2-s2.0-85149847083&partnerID=40&md5=21d753d8e51d8ddd3fa7117e9c8f7991>
- Mu'Ti, A., & Amirrachman, A. (2025). Local Wisdom-Based Multicultural Education: Muhammadiyah Experience. *Intellectual Discourse*, 33, 183–200. <https://www.scopus.com/inward/record.uri?eid=2-s2.0-85216833919&partnerID=40&md5=b769ca13b7253a25216acaa00269433f>
- Muhamad, H., Abdulah, D. C., & Ariani, N. (2025). community participation and social reconstruction post natural disasters based on local wisdom in sigi district central sulawesi province. *Jurnal Ilmiah Ilmu Terapan Universitas Jambi*, 9(2), 666–675. <https://doi.org/10.22437/jiituj.v9i2.37009>
- Muliadi, M., Lahjje, A. M., Simarangkir, B. D. A. S., & Ruslim, Y. (2017). Bioeconomic and environmental valuation of dipterocarp estate forest based on local wisdom in Kutai Kartanegara, Indonesia. *Biodiversitas*, 18(1), 401–408. <https://doi.org/10.13057/biodiv/d180152>
- Ngiu, Z., Laila, N. Q., Panai, A. H., Yunus, R., & Cuga, C. (2023). Strengthening Civic Education in a Multicultural School: A Local Wisdom Approach. *Eurasian Journal of Educational Research*, 2023(108), 213–228. <https://doi.org/10.14689/ejer.2023.108.012>
- Nugroho, W. (2021). Relationship between environmental management policy and the local wisdom of indigenous peoples in the handling of covid-19 in indonesia. *Onati Socio-Legal Series*, 11(3), 860–882. <https://doi.org/10.35295/OSLS.IISL/0000-0000-0000-1193>
- Pangemanan, F. N., Dondokambey, O., Ratag, S. P., Kimbal, A., Paat, F. J., Monintja, D. K., Waworundeng, W., & Kalengkongan, N. W.-W. (2024). Synergy of regional government policies for poverty alleviation in north sulawesi province through environmental management social politics local wisdom election of “hukum tua”: a case study of election of “hukum tua” in kanonang tiga village, Minahasa. *Revista de Gestao Social e Ambiental*, 18(6). <https://doi.org/10.24857/rgsa.v18n6-073>
- Pearnpitak, K., Akahat, N., & Mounong, P. (2024). Driving a three-age learning curriculum from local wisdom under the “yangkhinok model” in Thailand. *Humanities, Arts and Social Sciences Studies*, 24(3), 618–631. <https://doi.org/10.69598/hasss.24.3.267777>
- Pramono, P. S., Handoyo, H., Munandar, M. A., & Rachmand, M. (2020). Local wisdom: Pillar development of multicultural nations and national education values. *Cypriot Journal of Educational Sciences*, 15(6), 1587–1598. <https://doi.org/10.18844/CJES.V15I6.5319>
- Primayanti, N. W., & Puspita, V. (2022). Local wisdom narrative in environmental campaign. *Cogent Arts and Humanities*, 9(1). <https://doi.org/10.1080/23311983.2022.2090062>
- Purwaningsih, E., Liusti, S. A., Purnamasari, E., Ramadhan, R., & Nasution, A. F. R. (2024). The mount marapi eruption disaster evacuation path model using a local wisdom approach. *International Journal of GEOMATE*, 26(116), 64–71. <https://doi.org/10.21660/2024.116.4353>
- Puryanto, S. (2025). CONFLICT RESOLUTION EDUCATION MODEL BASED ON PIKUKUH (MPRKB): A STRATEGY TO STRENGTHEN LOCAL WISDOM-BASED LEARNING IN SCHOOLS. *Journal of Education Culture and Society*, 16(1), 985–1006. <https://doi.org/10.15503/jecs2025.2.985.1006>
- Putra, A. K., Mutia, T., Masruroh, H., Rizal, S., Khairunisa, T., Arinta, D., Arif, M., & Ismail, A. S. (2024). Local Wisdom for Global Challenges: Memayu Hayuning Bawono as a Model for Sustainable Environmental Practices. *International Journal of Sustainable Development and Planning*, 19(2), 527–538. <https://doi.org/10.18280/ijstdp.190210>
- Rahayu, J. D. E. (2019). The video learning based on local wisdom and students critical thinking. *International Journal of Scientific and Technology Research*, 8(12), 1607–1610. <https://www.scopus.com/inward/record.uri?eid=2-s2.0-85077313806&partnerID=40&md5=94084bab66c034727031ae4a1659d4b5>
- Rahim, M., Munir, A., & Marasabessy, F. (2023). Local Wisdom and Sustainable Features of Tidore Vernacular Architecture. *Civil Engineering and Architecture*, 11(2), 531–549. <https://doi.org/10.13189/cea.2023.110201>
- Rahman, A., Aarsal, T., & Shintasiwi, F. A. (2022). Local wisdom and strengthening social integration in multiethnic society post-aceh conflict. *Kasetsart Journal of Social Sciences*, 43(3), 575–582. <https://doi.org/10.34044/j.kjss.2022.43.3.06>
- Ramdani, A., Jufri, A. W., Fahrurrozi, M., & Yustiqvar, M. (2021). Analysis of students’ critical thinking skills in terms of gender using science teaching materials based on the 5e learning cycle integrated with local wisdom. *Jurnal Pendidikan IPA Indonesia*, 10(2), 187–199. <https://doi.org/10.15294/jpii.v10i2.29956>
- Ramdani, A., Jufri, A. W., Gunawan, Fahrurrozi, M., & Yustiqvar, M. (2021). Analysis of students’ critical thinking skills in terms of gender using science teaching materials based on the 5e learning cycle integrated with local wisdom. *Jurnal Pendidikan IPA Indonesia*, 10(2), 187–199. <https://doi.org/10.15294/jpii.v10i2.29956>
- Rideng, I. W., Budiarta, I. N. P., & Sukandia, I. N. (2020). The development of bali tourism through cultural and local wisdom of customary village. *International Journal of Entrepreneurship*, 24(5), 1–6. <https://www.scopus.com/inward/record.uri?eid=2-s2.0-85098987217&partnerID=40&md5=aa5104467817e0b4e4f299021f33d7cf>
- Rizal, A., Riyadi, A., Aliah, R. S., Prayogo, T., Prayitno, J., Purwanta, W., Susanto, J. P., Sofiah, N., & Djayadihardja, Y. S. (2022). Development of Sustainable Coastal Benchmarks for Local Wisdom in Pangandaran Village Communities. *Sustainability (Switzerland)*, 14(21). <https://doi.org/10.3390/su142114648>
- Rokayah, R., Disman, D., & Sapriya, S. (2017). A preliminary development of Sundanese local wisdom questionnaire (SLWQ) through educational college students’ responses. *Advanced Science Letters*, 23(11), 10922–10924. <https://doi.org/10.1166/asl.2017.10187>
- Saam, Z. (2023). Conservation Management Model of Subayang River in the Kampar Regency, Province of Riau based on Local Wisdom using Belida Fish (Chitala sp.) as Bioindicator. *Ecological Questions*, 34(3). <https://doi.org/10.12775/EQ.2023.025>
- Sedayu, A., Gautama, A. G., Rahmah, S., & Setiono, A. R. (2022). Religious tolerance, cultural, local wisdom and reliability in the Great Mosque building of Mataram Kotagede Yogyakarta. *Journal of Cultural Heritage Management and Sustainable Development*, 12(4), 593–608. <https://doi.org/10.1108/JCHMSD-06-2020-0088>
- Setiawan, E., Sukesu, K., Hidayat, K., & Yuliaty, Y. (2021). The role of the community around the buffer village in the conservation of alas purwo national park based on local wisdom. *International Research Journal of Multidisciplinary Scope*, 2(3), 13–21. <https://doi.org/10.47857/irjms.2021.v02i03.058>
- Sholeh, H. I. N., & Muttaqin, A. Z. (2024). Local wisdom in Sebambangan traditional marriage practices: A maqās{id shari’ah perspective. *Ijtihad: Jurnal Wacana Hukum Islam Dan Kemanusiaan*, 24(1), 119–137. <https://doi.org/10.18326/ijtihad.v24i1.119-137>
- Sholehuddin, M. S., Hardini, I., Jaeni, M., Sofa, E. M., & Ho, T. T. H. (2025). The Role of Local Wisdom in Shaping Internationalisation Strategies of Islamic Higher Education Institutions in Indonesia. *Intellectual Discourse*, 33(2), 607–634. <https://doi.org/10.31436/id.v33i2.2315>

- Sirinon, J. (2024). Management of Logistics Systems to Increase the Competitiveness of a Community Enterprise Processing Herbs from Local Wisdom in Buriram Province, Thailand. *Journal of Ecohumanism*, 3(7), 361–371. <https://doi.org/10.62754/joe.v3i7.4212>
- Smith, S. E., Mason, J. C., & Bowden, M. (2020). Local Wisdom in Regenerative Teacher Practices. *Australian Journal of Teacher Education*, 45(9), 91–107. <https://doi.org/10.14221/ajte.2020v45n9.6>
- Suarjana, K., Mulyawan, K. H., Duana, M. K., Kurniati, N. M., & Dewi, K. R. A. (2022). Social Norms and Potency of Local Wisdom as A Social Enforcement of Smoking Behavior. *Kemas*, 17(3), 342–353. <https://doi.org/10.15294/kemas.v17i3.26807>
- Sulaiman, U., Wilkins, D. E., Rahmawati, R., Subair, S., Bakri, W., Suban, A., Mihrani, M., Ilham, I., Kango, A., & Obie, M. (2023). Contribution of Local Wisdom of the Bajo Tribe to Preserve Indonesia's Mangrove Forests. *Academic Journal of Interdisciplinary Studies*, 12(3), 264–275. <https://doi.org/10.36941/ajis-2023-0076>
- Suprpto, N., Prahani, B. K., & Cheng, T. H. (2021). Indonesian curriculum reform in policy and local wisdom: Perspectives from science education. *Jurnal Pendidikan IPA Indonesia*, 10(1), 69–80. <https://doi.org/10.15294/jpii.v10i1.28438>
- Supriadi, A., Wulandari, S., Rostini, D., Heryanto, Y., & Dianwidhi, Y. (2020). Development of the community by the head of tourism to raise local wisdom batik ciwaringin image. *International Journal of Scientific and Technology Research*, 9(3), 698–700. <https://www.scopus.com/inward/record.uri?eid=2-s2.0-85083466023&partnerID=40&md5=661c21d57d388cb2cdde1cb75351fb89>
- Syahfitri, J. (2024). The effectiveness of local wisdom-based interactive digital module on students' critical thinking disposition. *International Journal of Evaluation and Research in Education*, 13(4), 2170–2177. <https://doi.org/10.11591/ijere.v13i4.28256>
- Syarifin, A., & Lestari, M. (2025). Educational Technology to Facilitate Access to Local Wisdom Practices in Religious Moderation. *International Research Journal of Multidisciplinary Scope*, 6(3), 349–357. <https://doi.org/10.47857/irjms.2025.v06i03.05129>
- Tohri, A., Rasyad, A., Sururuddin, M., & Istiqlal, L. M. (2022). The urgency of Sasak local wisdom-based character education for elementary school in East Lombok, Indonesia. *International Journal of Evaluation and Research in Education*, 11(1), 333–344. <https://doi.org/10.11591/ijere.v11i1.21869>
- Uge, S., Neolaka, A., & Yasin, M. (2019). Development of social studies learning model based on local wisdom in improving students' knowledge and social attitude. *International Journal of Instruction*, 12(3), 375–388. <https://doi.org/10.29333/iji.2019.12323a>
- Utomo, M. N., Kaujan, K., & Mubarak, A. (2023). Innovation to Improve the Village Economy Through the Development of Local Wisdom-Based Agro-Tourism, in North Kalimantan, Indonesia. *Agris On-Line Papers in Economics and Informatics*, 15(2), 115–131. <https://doi.org/10.7160/aol.2023.150210>
- Uyun, M., Fahmi, I., & Pratama, I. P. (2024). The role of local wisdom, cultural values, and religious values on cultivating social awareness and enhancing integrity in students. *Humanities and Social Sciences Letters*, 12(4), 1224–1238. <https://doi.org/10.18488/61.v12i4.3906>
- Wahyudie, P., Wulandari, L. D., & Santosa, H. (2021). Local wisdom of gapura in sunan ampel mosque based on the place attachment theory. *Civil Engineering and Architecture*, 9(7), 2147–2159. <https://doi.org/10.13189/cea.2021.090704>
- Wahyuningtyas, N., Sahrina, A., & Mutia, T. (2022). Analysis of the potential bamboo forest as an effort towards local wisdom-based ecotourism in sustainable spring conservation. *Journal of Ecology and Environment*, 46. <https://doi.org/10.5141/jee.22.032>
- Warella, Y., Shaluhayah, Z., & Nugraheni, S. A. (2022). "Mahaga Tihi" As a local wisdom on adolescent pregnancy of the dayak community, South Barito, Indonesia. *Southeast Asian Journal of Tropical Medicine and Public Health*, 53, 833–856. <https://www.scopus.com/inward/record.uri?eid=2-s2.0-85163276125&partnerID=40&md5=541b8e3ee77917ed862d7a2d650503f5>
- Widen, K., Batubara, M. Z., Atem, A., Anam, M. S., & Irawansyah, I. (2024). Local Wisdom-Based Tourism Development Model Through Exploration of Dayak Culture at the Isen Mulang Cultural Festival in Central Kalimantan, Indonesia. *Pakistan Journal of Life and Social Sciences*, 22(2), 8448–8461. <https://doi.org/10.57239/PJLSS-2024-22.2.00637>
- Yoesoef, Y. M., & Nur Sari Dewi, M. (2023). Sexual violence in the Islamic law perspective: Aceh Islamic Law and Local Wisdom Approach. *Ulumuna*, 27(1), 367–389. <https://doi.org/10.20414/ujs.v27i1.677>
- Zamzami, N., Fatah, L., & Nuryadin, M. R. (2025). The Local Wisdom of Bajau People in Pulau Laut Kotabaru for Sustainable Environmental Management. *Environment and Ecology Research*, 13(3), 440–446. <https://doi.org/10.13189/eer.2025.130312>